



TRURICH

[Home](#)

[About Us](#)

[Our Project Area](#)

[Highlight](#)

[Gallery](#)

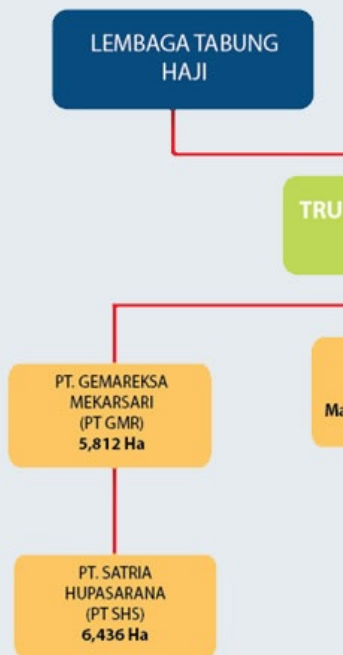
site navigation: [Home](#) > [about us](#) > [investment overview](#)

[Contact Us](#)

INVESTMENT OVERVIEW

As of 2011, Trurich has acquired a total of 41,99 (Kaltim) and Central Kalimantan (Kalteng) through companies. These companies are;

- PT. Gemareksa Mekarsari - Pandau and Liku
- PT. Satria Hupasarana - Bahau and Paleng pl
- PT. Tehnik Utama Mandiri - Seponti, Semanda
- PT. Anugrah Kembang Sawit Sejahtera - Tem
- PT. Usaha Kaltim Mandiri - Subandaru, Maritar



The details of total area owned and operated b

EXISTING COMPANIES		Mature
		PHASE 1:
1	PT AKSS	-
2	PT TUM	-
3	PT UKM	-
	Sub Total	-
		PHASE 2: Co
4	PT GMR	2764.1
5	PT SHS	143.52
	Sub Total	2907.67
GRAND TOTAL		2907.67

As can be seen from the table above, the three totals 29,166.64 Ha. Kalteng areas of PT GMR a immature areas totaling 3,164.76 Ha, greenfield ha.

Altogether, it brings Trurich's total areas in Kalt

About TRSB

Business Overview

Investment Overview

Board of Director

CEO and Management Group



Trurich Resources Sdn Bhd
Level 35, Menara TH Perdana,
1001, Jalan Sultan Ismail, 50250 Kuala Lumpur.
P: 03-2698 6677 F: 03-2698 6577

[Home](#) | [About Us](#) | [Our Project Area](#) | [Highlight](#) | [Gallery](#) | [Contact](#)

Copyright © 2013 Trurich Resources Sdn Bhd. Powered by lawa.biz