

TRIDENT

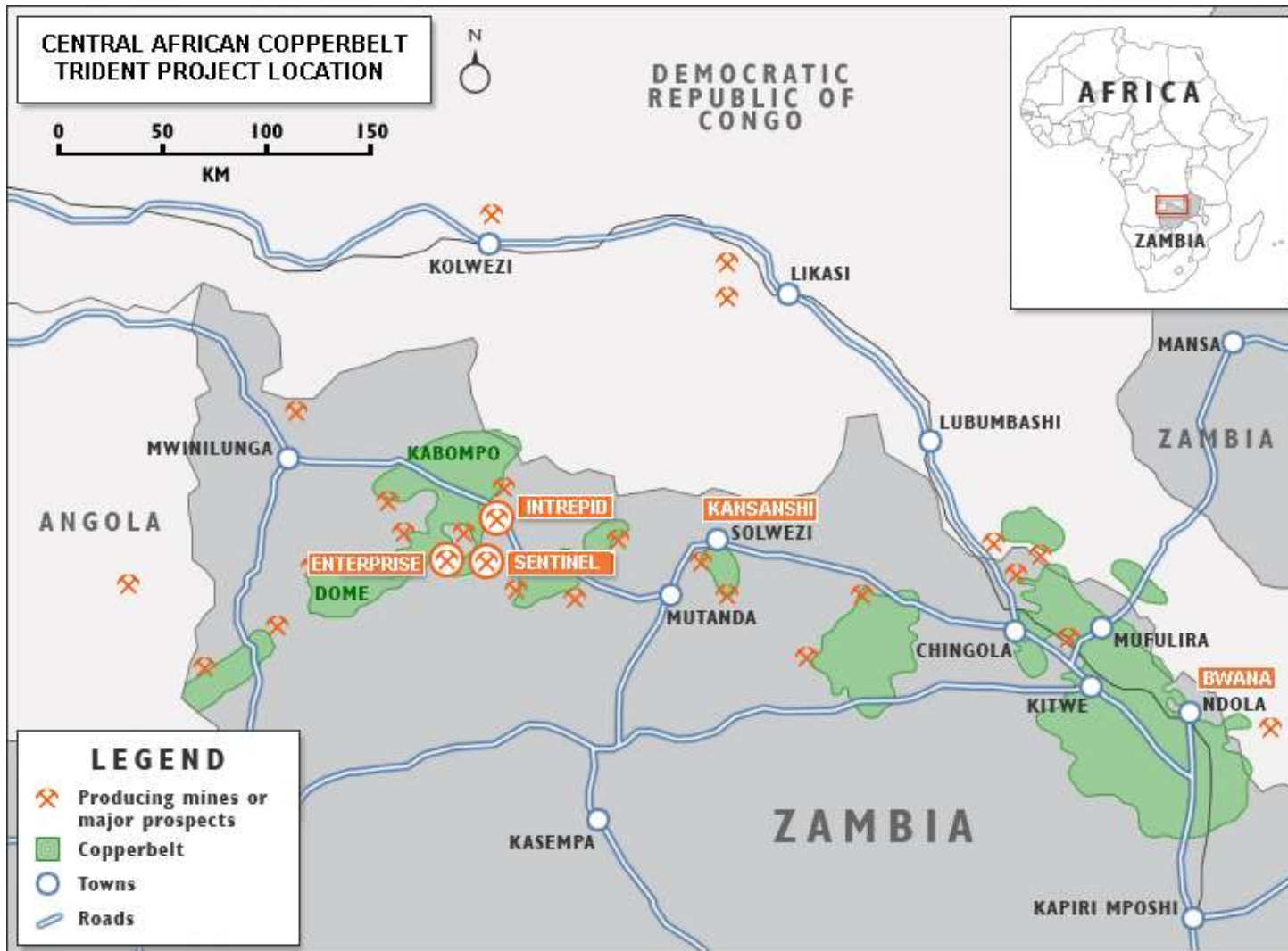


FIRST QUANTUM
MINERALS LTD.

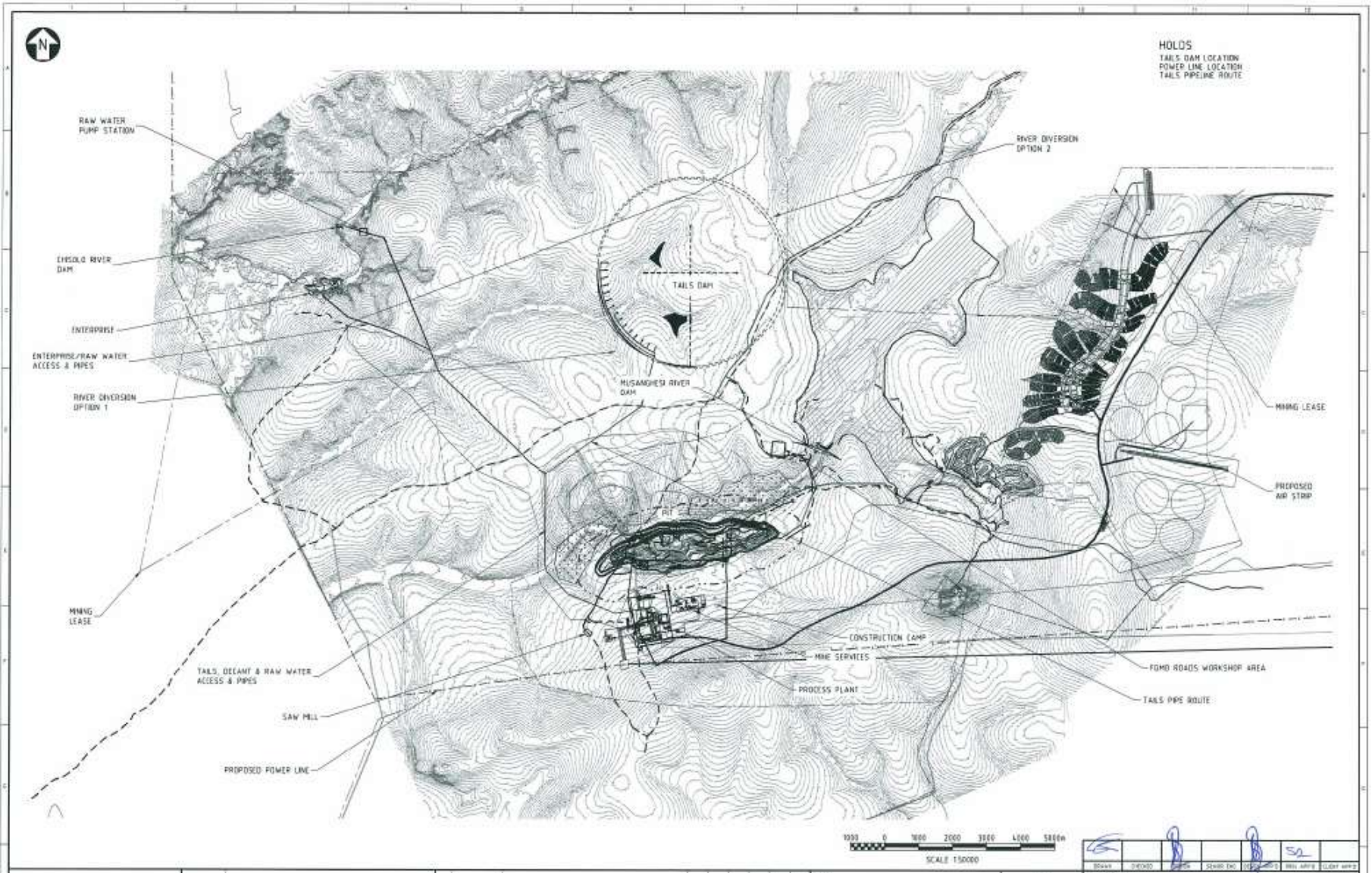
Sentinel & Enterprise Mines Introductory presentation – 28 August 2015



Trident Project location



Orientation – project layout



Sentinel - Zambia's newest Cu mine

Updated resource published March 2012:

- Total measured & indicated resource : 1,027Mt @ 0.51% Cu
- Strip ratio 2.2 : 1

Operations:

- Up to 55mtpa to achieve economies of scale (overcome low grade);
- 280,000 – 300,000t Cu production per annum;
- Sentinel puts Zambia at the forefront of global mining technology.

Sentinel's performance is an important precedent for future new Cu mines in Zambia

TRIDENT

Sentinel Project



Sentinel project scope – \$2.1billion

Zambia's largest single development project in recent times

- 55Mtpa target throughput;
- 265,000t of freight = 14,500 truckloads;
- 3 semi mobile in pit crushers;
- Largest operating SAG/Ball mills globally;
- 2 rivers diverted;
- Life of mine TSF;
- 600km of ZESCO 330kV transmission lines;
- 930 staff plus 630 resettlement houses;
- New town, clinic, 3 schools & airport.



PROJECT ACQUISITION – FEBRUARY 2010



FIRST ROUGH CONCENTRATE – DECEMBER 2014

TRIDENT

Sentinel Operations



Operations workforce

STEADY-STATE WORKFORCE	Total
Operations staff currently onsite	1,264
Active recruitment	310
Recruitment on hold	214
Approved operations positions	1,788
Ongoing indirect and contractor personnel	1,276
TOTAL	3,064

Mentoring, training & development

Equipment	Units
ThyssenKrupp 63-89 in pit crushers	3
FLSmidth 40' SAG mill (28MW)	2
FLSmidth 28' Ball mill (22MW)	2
Caterpillar MD6640 drills	7
Furukawa DCR20 drills	6
CAT 7495HR rope shovels	3
Komatsu PC5500 face shovels	2
Komatsu PC5500 excavator	1
Liebherr 9250 excavators	2
Liebherr 984 excavator	1
Komatsu 960E trucks (330 tonne)	15
Komatsu 860E trucks (250 tonne)	15
Komatsu HD1500 trucks (150 tonne)	10



TRIDENT

Enterprise



Enterprise Ni mine - awaiting go ahead

Maiden resource published December 2012:

- Total measured indicated resource : 40.1Mt @ 1.07% Ni

Operations:

- Potential 38,000 – 60,000t Ni production per annum;
- Preliminary works commenced. Plant will commission on copper ore.

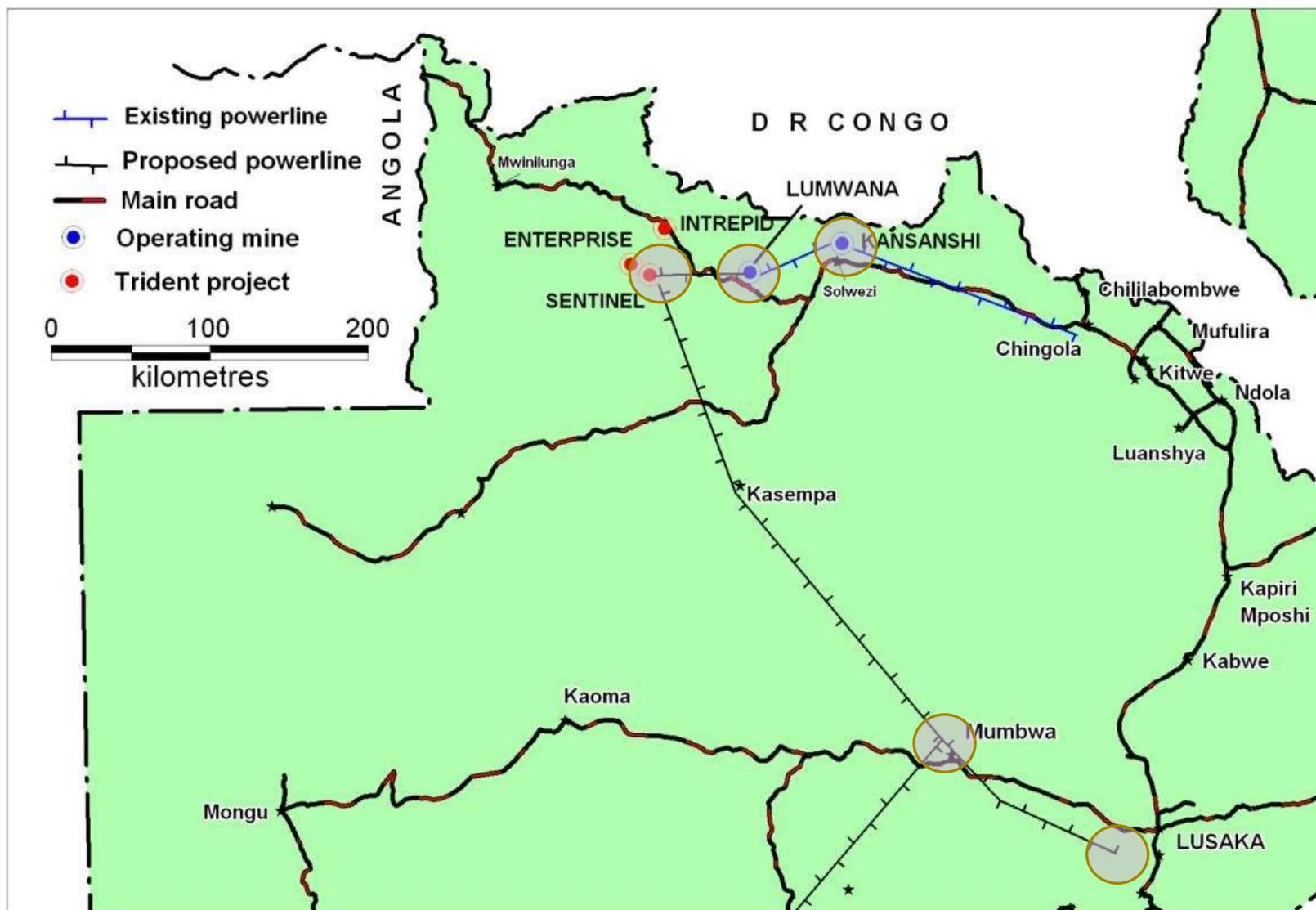
Project go ahead for Enterprise is contingent on nickel price and concentrate export levy

TRIDENT

Power Project



\$198M - Upgrades to ZESCO grid



600km FQM/ZESCO 330kV powerlines

Energise date - 12 Sept 2015



Lumwana – Kalumbila – Mumbwa

Contractor	Kalpataru
Distance (km)	68 + 394
Towers	164 + 872

Mumbwa – Lusaka West

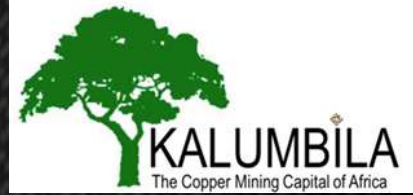
Contractor	KEC
Distance (km)	134
Towers	298

Substations

Kansanshi, Lumwana, Kalumbila	ABB
Lusaka West, Mumbwa	NCC

TRIDENT

Town development



Why has FQM built \$80M town?



1. Home ownership is a cornerstone of economic empowerment:

- Subsidised rent-to-own program – real economic empowerment starts at home:
 - Improves education;
 - Improves opportunities to start a business; and
 - Improves savings for retirement.

2. The town will be a significant multiplier on job creation:

- Sentinel will employ 3,064 direct and contractor personnel;
- A multiplier of between 4-8 is possible for service industries in the town.

3. Employee attraction and retention:

- KML seeks a well-rested workforce who live locally and develop the area in conjunction with the mine.

The town is open to investors – located outside the mining licence area

Progress – housing



Affordable Housing Layout



4-Bedroom House



3-Bedroom Housing



2-Bedroom House

Progress – commercial



Kalumbila Industrial Park



Guesthouse Serviced Apartments



Fuel Station



Banking Services

Progress – services



Town Clinic



Children's Playground and Sports Facilities



Frontier Affordable School



Supermarket and Market Area

TRIDENT

Community



\$20M – Community input so far

- Education:
 - Refurbishment plus new schools into the Trident Project area.
- Healthcare:
 - HIV awareness and VCT programs, plus malaria intervention.
- Conservation farming:
 - Peak program expected over 2015/16 season of approx 1000 farmers.
- Sawmill and furniture factory:
 - Providing employment and producing school and other furniture.
- Resettlement 99% complete.

2015 : community needs assessment for Trident Foundation CSR projects

The Trident Foundation



Education



Healthcare



Community Infrastructure



Conservation Farming



Livelihoods



Forest Conservation



Wildlife Conservation