



CATTLE



[HOME](#) [LOCATION](#) [DESIGN](#) [COMMUNITY](#) [HIW](#) [CONSERVANCY](#) [FAQ'S](#)



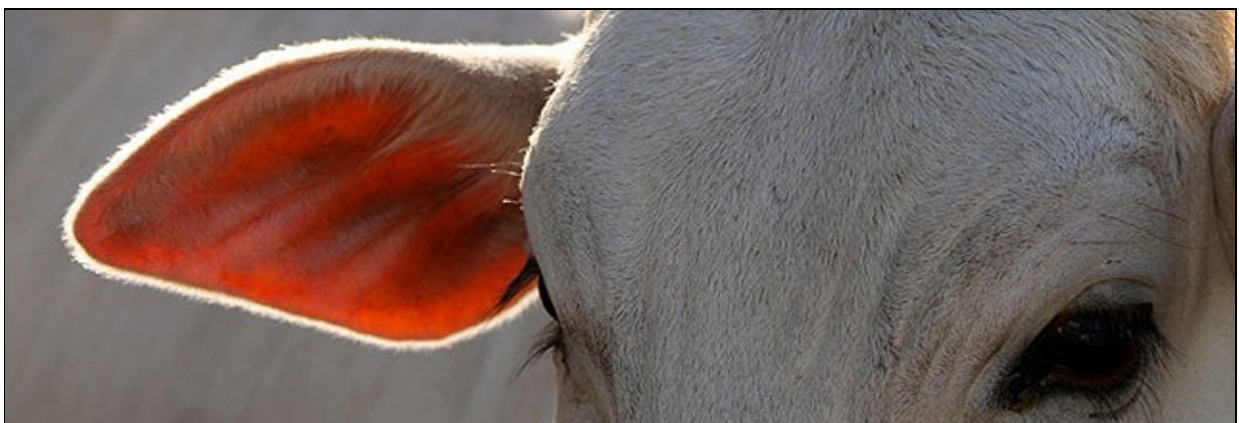
The Mara Beef Company raises top quality beef on the Naret oi Farm as well as within the Enonkishu Conservancy.

The beef farming business is dedicated to supplying consistently high quality beef to retailers and their customers.

The Mara Beef Company is working with the Maasai community on improving the livestock husbandry and the genetics for the local pastoralists by introducing high quality beef breeds such as Aberdeen Angus and Boran to their herds.



The Mara Beef Company is also opening market access for the Maasai pastoralists and introducing an improved holistic grazing management plan. This in turn improves the numbers of wildlife so that the livestock and wildlife within Enonkishu are managed in an integrated and sustainable manner.



CONTACT US

M: 0728 484 665

