

HOME

COVID-19 NEWS

LATEST NEWS

SECTOR NEWS

WORLD NEWS

MAGAZINE

VIDEO REPORTS

AUDIO

RESEARCH

PRESS OFFICE

ELECTRA MINING

ANNOUNCEMENTS

VIRTUAL SHOWROOM

LOGIN

Topics

What's On

Jobs

Mining Indaba

Apps

Product Portal

About Us

Legal Notice

Comment Guidelines

back to top

Live Twitter Feed

CREAMER MEDIA'S ENGINEERING NEWS



Africa Edition

R/€ = 17.90  
Au 1798.10 \$/oz

R/\$ = 15.92  
Pt 938.01 \$/oz

Follow @MiningWeekly

44.7K followers

MAKE THE WORLD SEE

**FIND WHAT YOU'RE LOOKING FOR, FAST!**

milestone | XProtect® Rapid REVIEW

MINING WEEKLY

Rough diamond production likely to increase by 2.50% in 2021

Download Full Report

**THE ASSAY**

www.theassay.com

Featuring fund manager insights, analyst reviews, CEO video interviews and mining company profiles.

Home / Sector News / Base Metals / Cobalt ← Back

# Lubambe Copper advancing new Zambian copper mine

2ND OCTOBER 2020

ARTICLE ENQUIRY SAVE THIS ARTICLE EMAIL THIS ARTICLE

BY: SIMONE LIEDTKE WRITER

FONT SIZE: - +

**Z**ambian miner Lubambe Copper Mine has completed an advanced concept study, revealing a new world-class copper resource and outlining the development of a new mine.

To progress the project, Lubambe says it “has been actively engaged” with all key levels of the Zambian government, noting that there are a number of approvals required for the project.

Daily Audio

Subscribe



Read Now

Advertise Now

ADVERTISEMENT

**ZEST** WEG Group

More than just products... Comprehensive solutions for the entire mining sector

WEG

CREAMER MEDIA'S

ASTEC

GLOBAL MINING NEWS IN REAL TIME

HOME

COVID-19 NEWS

LATEST NEWS

SECTOR NEWS

WORLD NEWS

MAGAZINE

VIDEO REPORTS

AUDIO

RESEARCH

PRESS OFFICE

ELECTRA MINING

ANNOUNCEMENTS

VIRTUAL SHOWROOM

LOGIN

Topics

What's On

Jobs

Mining Indaba

Apps

Product Portal

About Us

Legal Notice

Comment Guidelines

back to top

Live Twitter Feed



CEO **Nick Bowen** said on October 2 that, following completion of a recent drilling programme, the extension resource now stands at 135-million tonnes of copper/cobalt ore at an average grade of 3.65% copper and 0.05% cobalt at a cut-off grade of 2%.

The project also has “further opportunity for growth”.

ADVERTISEMENT



Solving tomorrow's mining and mineral processing challenges today.

web [www.umsint.com](http://www.umsint.com)



The updated resource statement contains an estimated 8.5-million tonnes of copper.

The extension project will involve, besides other elements, the sinking of new shafts and conveyor declines, as well as developing a new underground mine with initial production of 90 000 t/y of copper in concentrate, and then expanding to 160 000 t/y.

Bowen noted that another two years of detailed studies, design and approval processes would be needed to get the project ready for construction.

Current plans are to start construction in 2023 and to bring the mine into production around 2028.

The next steps are to progress the prefeasibility study of the new Lubambe extension project and obtain necessary technical and environmental approvals from government and other key stakeholders. 🏢

EDITED BY: CHANEL DE BRUYN  
CREAMER MEDIA SENIOR DEPUTY EDITOR ONLINE

[EMAIL THIS ARTICLE](#)

[SAVE THIS ARTICLE](#)

[ARTICLE ENQUIRY](#)

CREAMER MEDIA'S

ASTEC

GLOBAL MINING NEWS IN REAL TIME



[Comment Guidelines](#)

HOME

COVID-19 NEWS

LATEST NEWS

SECTOR NEWS

WORLD NEWS

MAGAZINE

VIDEO REPORTS

AUDIO

RESEARCH

PRESS OFFICE

ELECTRA MINING

ANNOUNCEMENTS

VIRTUAL SHOWROOM

LOGIN

Topics

What's On

Jobs

Mining Indaba

Apps

Product Portal

About Us

Legal Notice

Comment Guidelines

[back to top](#)

Live Twitter Feed

CREAMER MEDIA'S  
ENGINEERING NEWS



0 Comments [Creamer Media](#) [Disqus' Privacy Policy](#)

[1 Login](#)

[Favorite](#) [Tweet](#) [Share](#)

Sort by Best



Start the discussion...

LOG IN WITH

OR SIGN UP WITH DISQUS [?](#)

Name

Be the first to comment.

[Subscribe](#) [Add Disqus to your site](#) [Add Disqus](#) [Add](#) [Do Not Sell My Data](#)

### SERVICES

- Consulting Engineers
- Contract mining
- Crushing and Screening
- Drilling and Tunnelling
- Earthmoving
- Energy Services
- Explosives
- Furnaces and Kilns
- Material Handling
- Opencast/Quarries
- Pumps
- Valves

**LiDAR vs. Satellite Survey**

FREE ACCURACY STUDY

[DOWNLOAD](#)

epcm  
GLOBAL  
providing competitive intelligence

Contact Leanne: (+27) 082 579 6904  
Email: [info@epcm.co.za](mailto:info@epcm.co.za)  
[www.epcm.co.za](http://www.epcm.co.za)

**Simulation that delivers results**

- ↓ 47% Traffic Incidents
- ↓ 65% Brake Abuse
- ↓ 62% Engine Overspeed
- ↑ 20% Tire Life
- ↓ 15% Spot Time
- ↑ 14% Payloads
- ↑ 7% Dig Rate

[Learn more](#)

\* All results are average in-field improvements, documented and verified by external parties.

**WEBA**  
DRIVE INNOVATION & SOLUTIONS



CREAMER MEDIA'S

ASTEC

GLOBAL MINING NEWS IN REAL TIME

HOME

COVID-19 NEWS

LATEST NEWS

SECTOR NEWS

WORLD NEWS

MAGAZINE

VIDEO REPORTS

AUDIO

RESEARCH

PRESS OFFICE

ELECTRA MINING

ANNOUNCEMENTS

VIRTUAL SHOWROOM

LOGIN

Topics

What's On

Jobs

Mining Indaba

Apps

Product Portal

About Us

Legal Notice

Comment Guidelines

back to top

Live Twitter Feed

ABOUT

NEWSLETTERS

SUBSCRIPTIONS

ADVERTISE

[Channel](#)  
[Africa](#)  
[Polity](#)

[amermedia.co.za](http://amermedia.co.za)



**CAD/GIS  
A1/A0 PLOTTERS**



Buy from R21075\* /  
Rent from 2750pm\*

[VIEW FULL RANGE](#)

010 020 9999  
azeromw@midcomp.co.za

\*T&C apply



**MULTOTEC**

[www.multotec.com](http://www.multotec.com)



**Rio-Carb**

**GOOD NEWS  
FOR USERS OF  
LINER  
PLATES**

**80%  
CARBON  
SAVINGS**



Consult Rio-Carb for  
a full carbon  
emission reduction  
assessment

+27 (11) 011 6111  
[www.riocarb.com](http://www.riocarb.com)  
[info@riocarb.co.za](mailto:info@riocarb.co.za)

CREAMER MEDIA'S  
ENGINEERING NEWS



**ASTEC**

CREAMER MEDIA'S

GLOBAL MINING NEWS IN REAL TIME

HOME

COVID-19 NEWS

LATEST NEWS

SECTOR NEWS

WORLD NEWS

MAGAZINE

VIDEO REPORTS

AUDIO

RESEARCH

PRESS OFFICE

ELECTRA MINING

ANNOUNCEMENTS

VIRTUAL SHOWROOM

LOGIN

Topics

What's On

Jobs

Mining Indaba

Apps

Product Portal

About Us

Legal Notice

Comment Guidelines

back to top

Live Twitter Feed



CREAMER MEDIA'S

GLOBAL MINING NEWS IN REAL TIME



Contact the most comprehensively equipped heavy diesel engine component remanufacturer in Africa

www.metricauto.co.za

GLENCORE

PROGRESS. TOGETHER.



Core Logging

www.gemecs.co.za

+27 13 243 0869

- HOME
- COVID-19 NEWS
- LATEST NEWS
- SECTOR NEWS
- WORLD NEWS
- MAGAZINE
- VIDEO REPORTS
- AUDIO
- RESEARCH
- PRESS OFFICE
- ELECTRA MINING
- ANNOUNCEMENTS
- VIRTUAL SHOWROOM

**LOGIN**

- Topics
- What's On
- Jobs
- Mining Indaba
- Apps
- Product Portal
- About Us
- Legal Notice
- Comment Guidelines
- back to top
- Live Twitter Feed



**Celebrating  
25 Years**



Solving tomorrow's  
mining and mineral  
processing  
challenges today.

web [www.umsint.com](http://www.umsint.com)



Air Liquide  
is a leading  
innovator in the  
application of  
gases to assist  
the metallurgy  
industry.



CREAMER MEDIA'S

GLOBAL MINING NEWS IN REAL TIME

- HOME
- COVID-19 NEWS
- LATEST NEWS
- SECTOR NEWS
- WORLD NEWS
- MAGAZINE
- VIDEO REPORTS
- AUDIO
- RESEARCH
- PRESS OFFICE
- ELECTRA MINING
- ANNOUNCEMENTS
- VIRTUAL SHOWROOM

**LOGIN**

- 
- Topics
  - What's On
  - Jobs
  - Mining Indaba
  - Apps
  - Product Portal
  - About Us
  - Legal Notice
  - Comment Guidelines

[back to top](#)

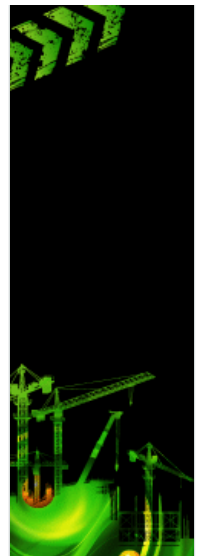
[Live Twitter Feed](#)



**ASTEC**

CREAMER MEDIA'S

GLOBAL MINING NEWS IN REAL TIME



**ADVANCED**  
THE EXPERTISE TECHNOLOGIES

**MINING SOLUTIONS**

Safety.  
Productivity.  
Versatility.

**MANITOU**  
HANDLING YOUR WORLD

- HOME
- COVID-19 NEWS
- LATEST NEWS
- SECTOR NEWS
- WORLD NEWS
- MAGAZINE
- VIDEO REPORTS
- AUDIO
- RESEARCH
- PRESS OFFICE
- ELECTRA MINING
- ANNOUNCEMENTS
- VIRTUAL SHOWROOM

**LOGIN**

- Topics
- What's On
- Jobs
- Mining Indaba
- Apps
- Product Portal
- About Us
- Legal Notice
- Comment Guidelines

back to top

Live Twitter Feed



**ASTEC**

CREAMER MEDIA'S

GLOBAL MINING NEWS IN REAL TIME

**Triple Bottom Line**  
People • Planet • Profits

#ESG trending

Sustainability is always going to be a good long-term investment.

**Sibanye** we are one  
**Stillwater**

#OurMiningImprovesLives

We wear many hats, but when it comes down to it...

- ADVISORY
- OPERATIONS
- SYSTEM INTEGRATION

**WE DO MINING**

**UKWAZI**  
we do mining

www.ukwazi.com

**WEIR**

**Minerals**

The proven choice for highly abrasive slurry applications

www.isogate.weir



- HOME
- COVID-19 NEWS
- LATEST NEWS
- SECTOR NEWS
- WORLD NEWS
- MAGAZINE
- VIDEO REPORTS
- AUDIO
- RESEARCH
- PRESS OFFICE
- ELECTRA MINING
- ANNOUNCEMENTS
- VIRTUAL SHOWROOM

**LOGIN**

- Topics
- What's On
- Jobs
- Mining Indaba
- Apps
- Product Portal
- About Us
- Legal Notice
- Comment Guidelines

[back to top](#)

[Live Twitter Feed](#)



CREAMER MEDIA'S

GLOBAL MINING NEWS IN REAL TIME

**MAXAM**

provides the highest level of technical services and advice to minimise costs in your business.



Tel: +27 11 831-1300  
www.maxamcorp.com

Innovation that Serves



**SCHAUBURG**  
Systems



www.schauburg.co.za

Delivering on safety, compliance in the oil and gas sector



Speak to us



**WEIR**

MINING NEWS

- HOME
- COVID-19 NEWS
- LATEST NEWS
- SECTOR NEWS
- WORLD NEWS
- MAGAZINE
- VIDEO REPORTS
- AUDIO
- RESEARCH
- PRESS OFFICE
- ELECTRA MINING
- ANNOUNCEMENTS
- VIRTUAL SHOWROOM

**LOGIN**

- 
- Topics
  - What's On
  - Jobs
  - Mining Indaba
  - Apps
  - Product Portal
  - About Us
  - Legal Notice
  - Comment Guidelines

[back to top](#)

[Live Twitter Feed](#)



**ASTEC**

CREAMER MEDIA'S

GLOBAL MINING NEWS IN REAL TIME



- HOME
- COVID-19 NEWS
- LATEST NEWS
- SECTOR NEWS
- WORLD NEWS
- MAGAZINE
- VIDEO REPORTS
- AUDIO
- RESEARCH
- PRESS OFFICE
- ELECTRA MINING
- ANNOUNCEMENTS
- VIRTUAL SHOWROOM

**LOGIN**

- Topics
- What's On
- Jobs
- Mining Indaba
- Apps
- Product Portal
- About Us
- Legal Notice
- Comment Guidelines

[back to top](#)

[Live Twitter Feed](#)



CREAMER MEDIA'S

GLOBAL MINING NEWS IN REAL TIME



HOME

COVID-19 NEWS

LATEST NEWS

SECTOR NEWS

WORLD NEWS

MAGAZINE

VIDEO REPORTS

AUDIO

RESEARCH

PRESS OFFICE

ELECTRA MINING

ANNOUNCEMENTS

VIRTUAL SHOWROOM

LOGIN

Topics

What's On

Jobs

Mining Indaba

Apps

Product Portal

About Us

Legal Notice

Comment Guidelines

back to top

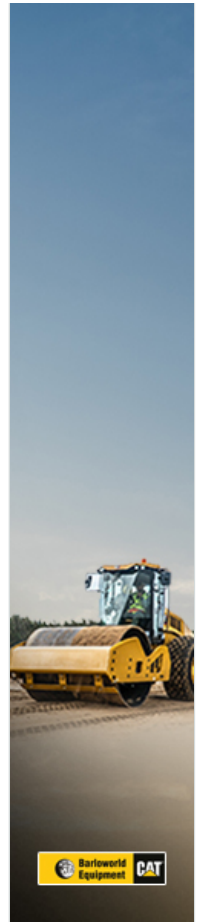
Live Twitter Feed



ASTEC

CREAMER MEDIA'S

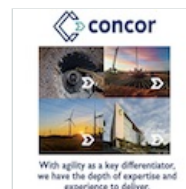
GLOBAL MINING NEWS IN REAL TIME



- HOME
- COVID-19 NEWS
- LATEST NEWS
- SECTOR NEWS
- WORLD NEWS
- MAGAZINE
- VIDEO REPORTS
- AUDIO
- RESEARCH
- PRESS OFFICE
- ELECTRA MINING
- ANNOUNCEMENTS
- VIRTUAL SHOWROOM

**LOGIN**

- Topics
- What's On
- Jobs
- Mining Indaba
- Apps
- Product Portal
- About Us
- Legal Notice
- Comment Guidelines
- back to top
- Live Twitter Feed



**ZEST**  
WEG Group  
[www.zestweg.com](http://www.zestweg.com)

**More than just products...**  
Comprehensive solutions for all your energy needs

sq:0.162 1.237s - 291pq - 2rq

[Legal Notice](#)   [Comment Guidelines](#)   © Copyright 2021



**Subscribe Now for \$119**

FREE DAILY EMAIL NEWSLETTER   REGISTER NOW