



 SlidePlayer 28 / 28



Keep the Classroom Anywhere

The country might be on lockdown but learning does not have to stop.

LARK

OPEN

 38

 Similar presentations

IBRD Bio-Carbon Fund Project (TF056658) Facilitating Reforestation for Guangxi Watershed Management in Pearl River Basin, China XIANG Dongyun Professor,

Published by [Peregrine French](#)

Modified over 4 years ago

3

</>

Embed



Download presentation

Bitcoin Exchange - Crypto Exchange

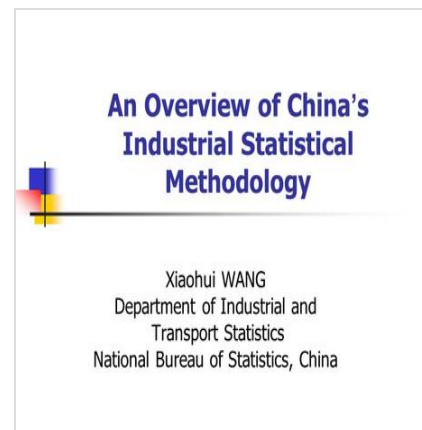
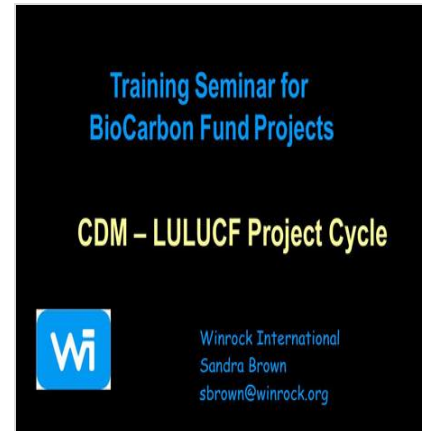
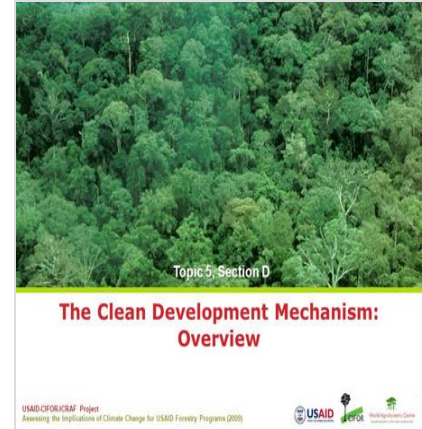
Enjoy exclusive 10\$ newbie bonus to trade everywhere with the safest platform io

Presentation on theme: "IBRD Bio-Carbon Fund Project (TF056658)
Facilitating Reforestation for Guangxi Watershed Management in
Pearl River Basin, China XIANG Dongyun Professor,"— Presentation
transcript:

1 IBRD Bio-Carbon Fund Project (TF056658) Facilitating Reforestation for
Guangxi Watershed Management in Pearl River Basin, China
XIANG Dongyun
Professor, Director
Guangxi Forestry Research Institute, China

2 **1. PROJECT MARKER Project Name:**
Facilitating Reforestation for Guangxi Watershed Management in Pearl River
Basin, China
Project Number: TF056658
Methodology Number: AR-AM0001
Registered Number: Project 0547
Project Organizing Agency:
Project Management Office of Guangxi Forestry Bureau

3 **Project Implementation Agency:**
Guangxi Huanjiang Xinghuan Forestry Co. Ltd.
Project Commencing Date:
1 April 2006
Project Duration:
Construction period ;



powerpoint presentation

they grow sugarcane in passi

active passive voice grammar

simple present tense

grammar test

Operation period

4 Investment and Cost Component

Totaling RMB 181 million yuan for 30 years.

RMB million yuan for construction input.

RMB million yuan for operation cost.

30% from local bank short-term loan, 70% from forestation entity and farmers.

5 2. Project Locality and Scale

Cangwu County and Huanjiang County, Guangxi, China.

Including 27 villages, 13 in Cangwu County, 14 Huanjiang County,

Totaling 52 blocks of plantation and 5000 households.

4000 ha of multi function forest

6 项目区在广西的位置**7 Area 1: Huanjiang County, 2000 ha****8** Area 2: Cangwu County, 2000

ha

9 Organizational Framework

Organizing:

Guangxi Provincial Project Management Office

Project area and other related agencies cooperate

Instructing:

The Bank and national bio-carbon experts

Designing:

Guangxi Forestry Design Institute

Researching:

Guangxi Forestry Research Institute

11 The BioCarbon Fund Manager

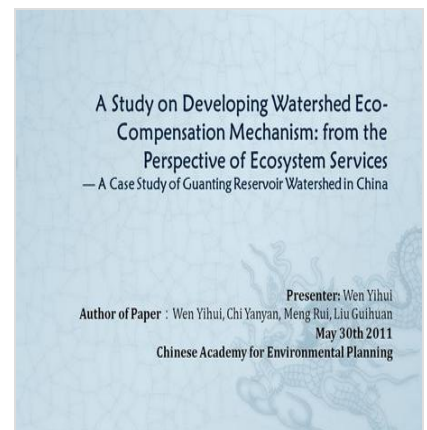
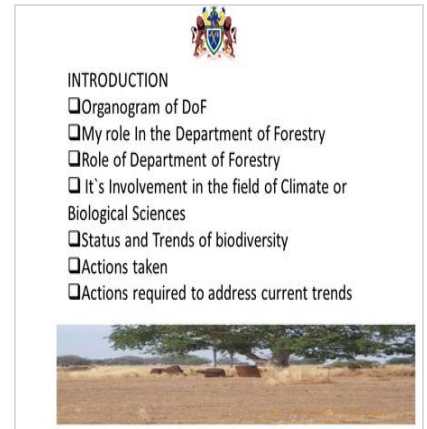
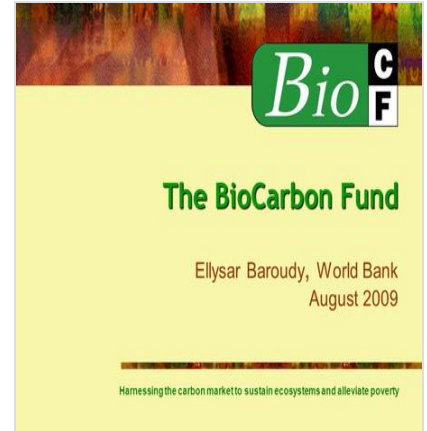
Methodology Specialist, Joanneum

13 3. Project Design ——species and method

**Method of Evaluating
Afforestation/Reforestation CDM Project
- An Indonesia Case Study -**

Sumitomo Forestry Co., Ltd.,
Tokyo, Japan

June 5, 2003
Bonn



Tree species and reforestation method in Huanjiang:

Mix forest (Cunninghamia+Pinus) ha

Mix forest (Cunninghamia+fir) ha

Eucalyptus ha

14 Tree species and reforestation method in Cangwu:

Mix forest (Quercus + Pinus) ha

Mix forest (Schima + Pinus) ha

Eucalyptus ha

15 —Harvest term Quercus. 7 years Eucalyptus 9 years Liquidamba 17 years

Schima years

Cunninghamia, Pinus > 30 years

16 Project Afforestation Plan

Species/model

Species scale

2006 (ha)

2007(ha)

Total area (ha)

Quercus and Pinus

6:4

100

800

900

Schima and Pinus

220

380

600

Cunninghamia, fir

450

Cunninghamia, Pinus

490

560

1050

Eucalyptus

850

150

1000

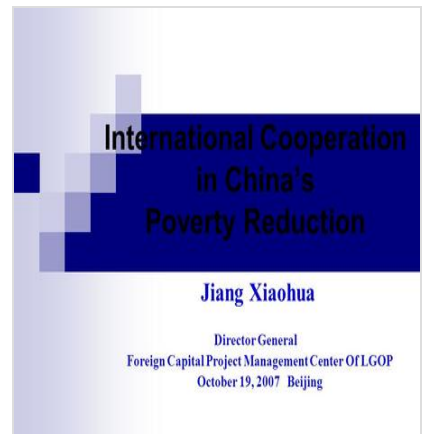
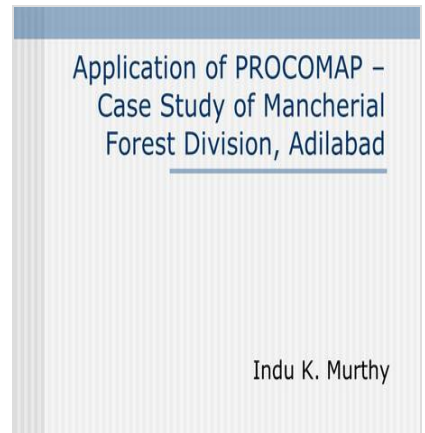
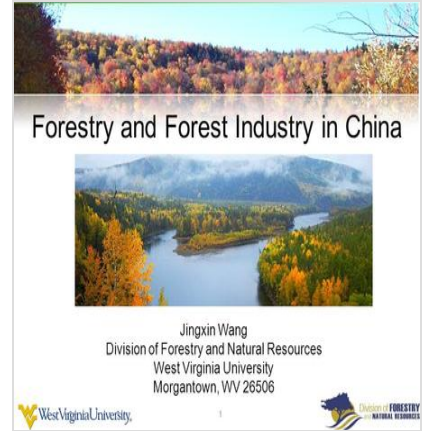
Total

1660

2340

4000

17 —land ownership and management model



Reforestation land belongs to local village, reforestation and management would be contracted to farmers. There are 2 management models:

Models 1: Joint operation among households or sole operation by themselves, all the forest products and carbon revenue belong to farmers.

Models 2: Joint operation between households and forest farms/forestation companies:

revenues from forest products by the ratio of 4:6 and

revenues from carbon by the ratio of 6:4

18 **GIS and GPS for checking and monitoring;**

—Project monitoring

GIS and GPS for checking and monitoring;

Biomass monitoring by setting up permanent standard plots

Fixed plot monitoring, including:

set up 110 fixed sample plots

area totaling 440 ha.

Measure tree height and DBH

Testing of sample plots each year

10% random checks

19 **Erick C.M.Fernandes Land Management Adviser from the WB**

21 **4. Project Anticipated Benefits**

5,000 households of beneficiaries ;

Anticipated revenue USD 21.1 million

USD 15.6 million of labor income

USD million of woods and non-wood products

USD million of CER

Annual net income per farmer will increase by 23.8% compared with 2004.

22 —Carbon price

In the project carbon sequestration purchase intent paper signed with IBRD on 27 May 2005, project carbon price is :

4.00US \$ /tCO₂.

Considering the less and less risk thanks to successful and smooth preparation work, on 3rd April 2006, IBRD agreed to increase the price to:

4.35US \$ /tCO₂ .

23 **Profile of the forestland after planted**

Condition of forestland before planting

Profile of the forestland after planted

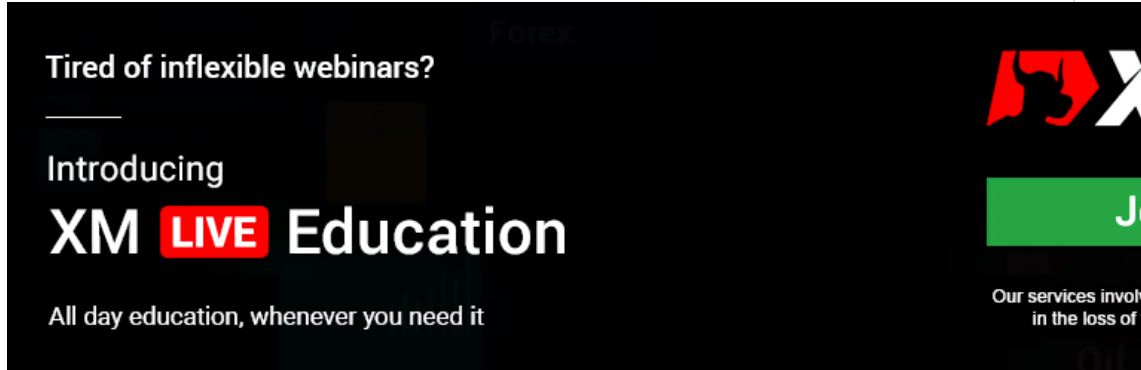
27 **5. Existing Issues and discussion**

Strict forestland selection requirements lead to difficulty in finding the appropriate land.

New situation and problems lead to difficulty in adjusting.

Restrict in Eucalyptus and other exotic species application in the project.
Long period and large input in initial stage lead to difficulty in financing for foresters.

28 Thank You !



Tired of inflexible webinars?

Introducing
XM LIVE Education

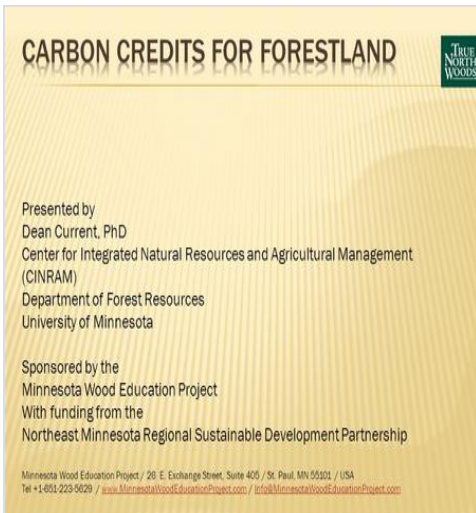
All day education, whenever you need it

Our services involve
in the loss of y

Job

[Download ppt "IBRD Bio-Carbon Fund Project \(TF056658\) Facilitating Reforestation for Guangxi Watershed Management in Pearl River Basin, China XIANG Dongyun Professor,"](#)

Similar presentations

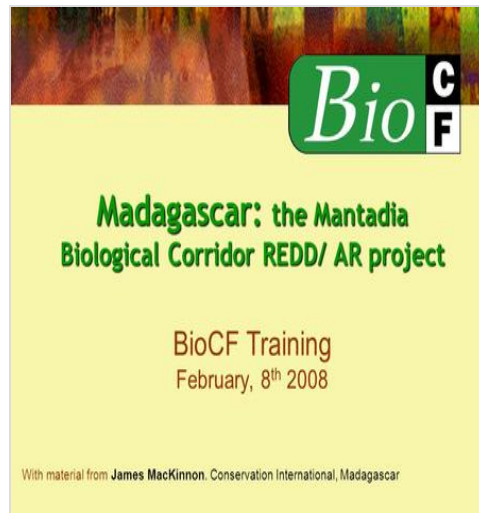


CARBON CREDITS FOR FORESTLAND

Presented by
Dean Current, PhD
Center for Integrated Natural Resources and Agricultural Management (CINRAM)
Department of Forest Resources
University of Minnesota

Sponsored by the
Minnesota Wood Education Project
With funding from the
Northeast Minnesota Regional Sustainable Development Partnership

Minnesota Wood Education Project / 26 E. Exchange Street, Suite 405 / St. Paul, MN 55501 / USA
Tel +1 651 223-9529 / www.MinnesotaWoodEducationProject.com / info@MinnesotaWoodEducationProject.com



BioCF

Madagascar: the Mantadia Biological Corridor REDD/ AR project

BioCF Training
February, 8th 2008

With material from James MacKinnon, Conservation International, Madagascar



Ultimate Brilliant Workshop

Ultimate Workshop
9-10th April 2011

9 - 10 April 2011

diamond