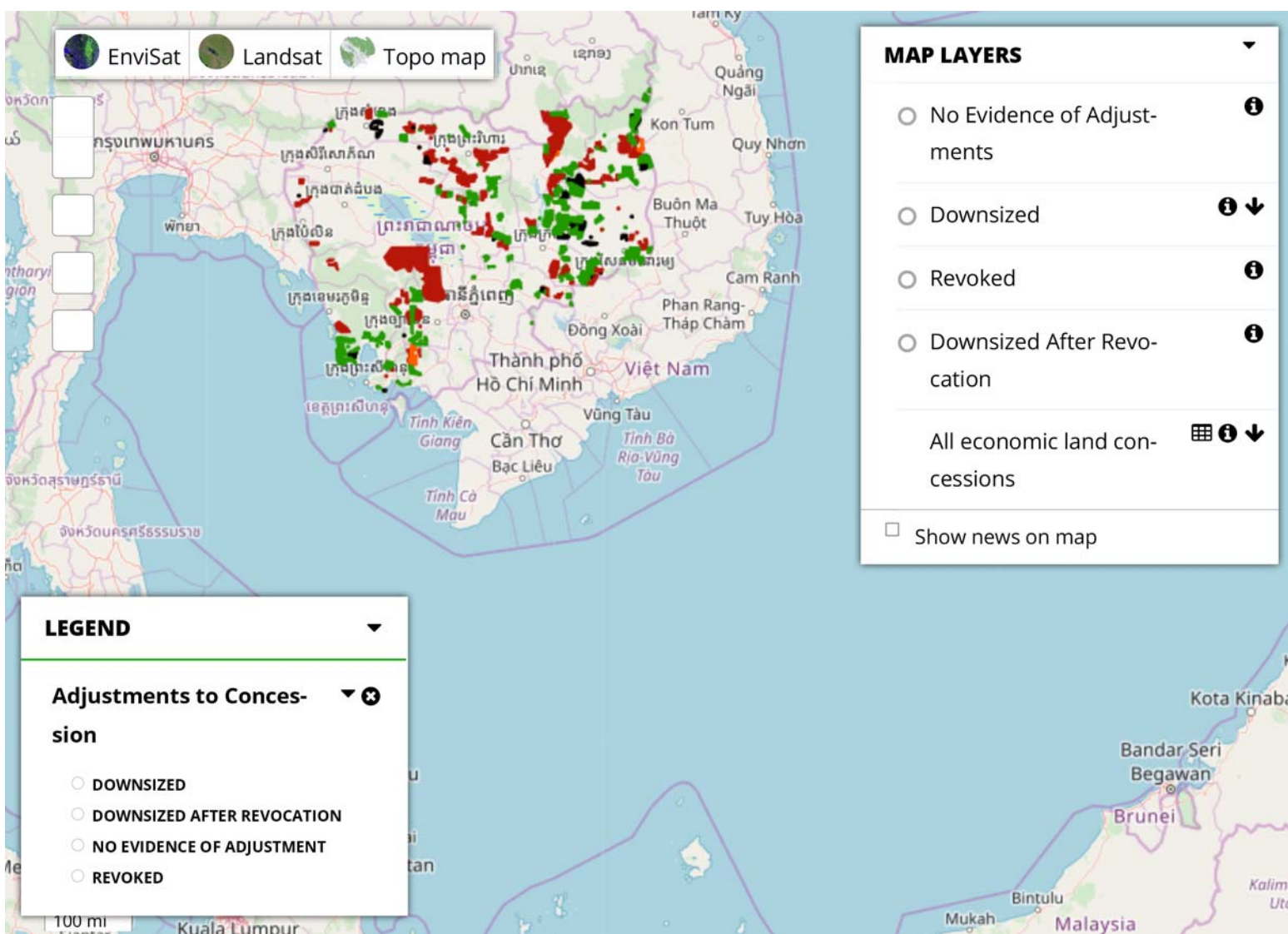


## Economic land concessions

3 May 2016



### Seang Long Green Land Investment (Cambodia) Co. Ltd.



<b>Developer</b>	Seang Long Green Land Investment (Cambodia) Co. Ltd.
<b>Adjustment classification</b>	No evidence of adjustment ⓘ
<b>Developer country</b>	China
<b>Developer address</b>	100A St. 320, Sangkat Phsar Daeum Kor, Khan Tuol Kouk, Phnom Penh, Cambodia
<b>Intended investment</b>	Rubber Acacia

<b>Intended crop or project</b>	Agro-industry
<b>Contract term (year)</b>	50
<b>Granted land area (hectare)</b>	7,000
<b>Source of land size</b>	Ministry of Agriculture Forestry and Fisheries
<b>Contract authority</b>	Ministry of Agriculture Forestry and Fisheries
<b>Director</b>	Ma Sheng
<b>Director nationality</b>	Chinese
<b>Contract date</b>	12/8/2009
<b>Sub-decree reclassifying land use</b>	Not found
<b>Province/Capital city</b>	Mondulkiri
<b>Granted land area (hectare)/Khan(s)</b>	Pech Chreada Keo Seima
<b>Commune/Sangkat</b>	Chong Phlah Pu Chrey
<b>Town/Municipality</b>	Not found
<b>Previous land use</b>	Not found
<b>Developer land use plan</b>	Included in master plan
<b>IEIA/EIA status</b>	Not found
<b>Data Classification</b>	Government data complete 

## Reference documents

[Notification No.283 on the results of the inter-ministerial committee's meeting for assessment, measurement and evaluation of ELCs dated on 9 March 2015](#)

(13 March 2015)

Based on the results of the inter-ministerial committee meeting for assessment, measurement and evaluation of the economic land concessions (ELCs) dated on 9 March 2015, the Office of the Council of Ministers decided to permit companies to continue procedures in forces over land areas after compensation and then re-sign the contracts, and to reduce the term of ELCs up to 50 years. The Office accepted the request made by Mr. Krisda Montheienvichienchai to return the ELCs in Oddar Meanchey province to the state. Some ELC projects cover the land areas in Mondolkiri Protected Forest.

[Companies invested in economic land concession who registered their contracts with the Ministry of Agriculture: 55. Seang Long Green Land Investment \(Cambodia\) Co., Ltd](#)

(08 June 2012)

A webpage list showing the date of ELC contract, the ELC location and size, status of EIA and land registration, and type of crops invested by the concessionaire Seang Long Green Land Investment (Cambodia) Co., Ltd.

[Economic land concessions profile: Seang Long Green Land Investment \(Cambodia\) Co., Ltd](#)

(21 June 2011)

A webpage list showing company name, address, director name and nationality, status of company registration with the Ministry of Commerce, legal papers and investment rights, ELC size and location with coordinates, purpose of investment, contract duration, land utilization plan, profess of implementation after contract signing, and any measures taken by the Ministry of Agriculture (MAFF).

^

This work and any original materials produced and published by Open Development Cambodia herein are licensed under a CC BY-SA 4.0. News article summaries are extracted from their sources, as guided by fair-use principles and are copyrighted by their respective sources. Materials on the Open Development Cambodia (ODC) website and its accompanying database are compiled from publicly available documentation and provided without fee for general informational purposes only. This is neither a commercial research service nor a domain managed by any governmental or inter-governmental agency; it is managed as a private non-profit open data/open knowledge media group. Information is publicly posted only after a careful vetting and verification process. However, ODC cannot guarantee accuracy, completeness or reliability from third party sources in every instance. ODC makes no representation or warranty, either expressed or im-

plied, in fact or in law, with respect to the accuracy, completeness or appropriateness of the data, materials or documents contained or referenced herein or provided.

Site users are encouraged to do additional research in support of their activities and to share the results of that research with our team, contact us to further improve the site accuracy.

By accessing this ODC website or database users agree to take full responsibility for reliance on any site information provided and to hold harmless and waive any and all liability against individuals or entities associated with its development, form and content for any loss, harm or damage suffered as a result of its use.

**ABOUT US**   **CONTACT**   **DISCLAIMER**   **TERMS OF USE**

This website is built on **WordPress** using the **JEO Beta** theme and **CKAN** as back-end for structured data. To learn more about the system architecture, read our **documentation**.