

# CIB OLAM IS 100% FSC CERTIFIED

## WE MANAGE 2 MILLION HA OF FSC CERTIFIED TROPICAL HARDWOOD CONCESSIONS.

### Guaranteeing sustainable management through FSC certification.

At CIB-Olam, we believe the production and sale of wood products are inseparable from the principles of Responsible & Sustainable Forest Management.

Hence, we prioritise sustainable certification for our concessions, among others, FSC®.

### A Brief History of CIB-Olam

A wholly-owned subsidiary of global agri-business Olam International since 2011, CIB has been operating in the Republic of Congo (Brazzaville) since 1968. Our operations are headquartered in the northern region of the country, in Pokola. Our legacy of 51 years is a solid proof of our successful operations, enriched experience, and wealth of knowledge about the Congo Basin. It has enabled us to be the voice of the region and attain trustworthy, long-term partnerships. After receiving 3 FSC certificates for our concessions (Pokola, Kabo, Loundoungou); now that we have received the last certification for Mimbéli-Ibenga; it further strengthens our resolve to invest in the future of the forests, its people, responsible & sustainable forestry.

CIB specialises in sustainable and responsible forestry. We supply processed tropical hardwoods for a variety of uses including door and window frames, decking, marine timber and furniture.

### About the Certification

The stringent process involves months and years of work, targeting to fulfill 10 Principles, 70 criteria and 379 indicators.

The areas of focus include Compliance with Laws, Workers' Rights and Employment Conditions, Indigenous Peoples' Rights, Community Relations, Benefits from the Forest, Environmental Values and Impacts, Management Planning, Monitoring and Assessment, High Conservation Values, and Implementation of Management Activities.



### The FSC Certification for Mimbéli-Ibenga was achieved in a record time of four years

#### JAN, 2016

Concession awarded to CIB-Olam from the state.

#### APR, 2016 - MAR 2017

Work on Management Plan begins immediately  
240 days spent on the field.

#### MAY, 2019

Management Plan Signed.

#### SEP, 2019

Audit and application for FSC Certification.

#### MAR, 2020

FSC Certification Received.

## MIMBELI-IBENGA IN NUMBERS



**375,738**  
Trees Inventoried.



**119,939**  
Hectares dedicated for protection and conservation.



**78,023**  
Hectares given to Indigenous Population for livelihood.



**2,200**  
Kilometres of Transects build to inventory the trees and animals.



**2,000+**  
Persons involved in the making of the Management Plan and the creation of infrastructure.



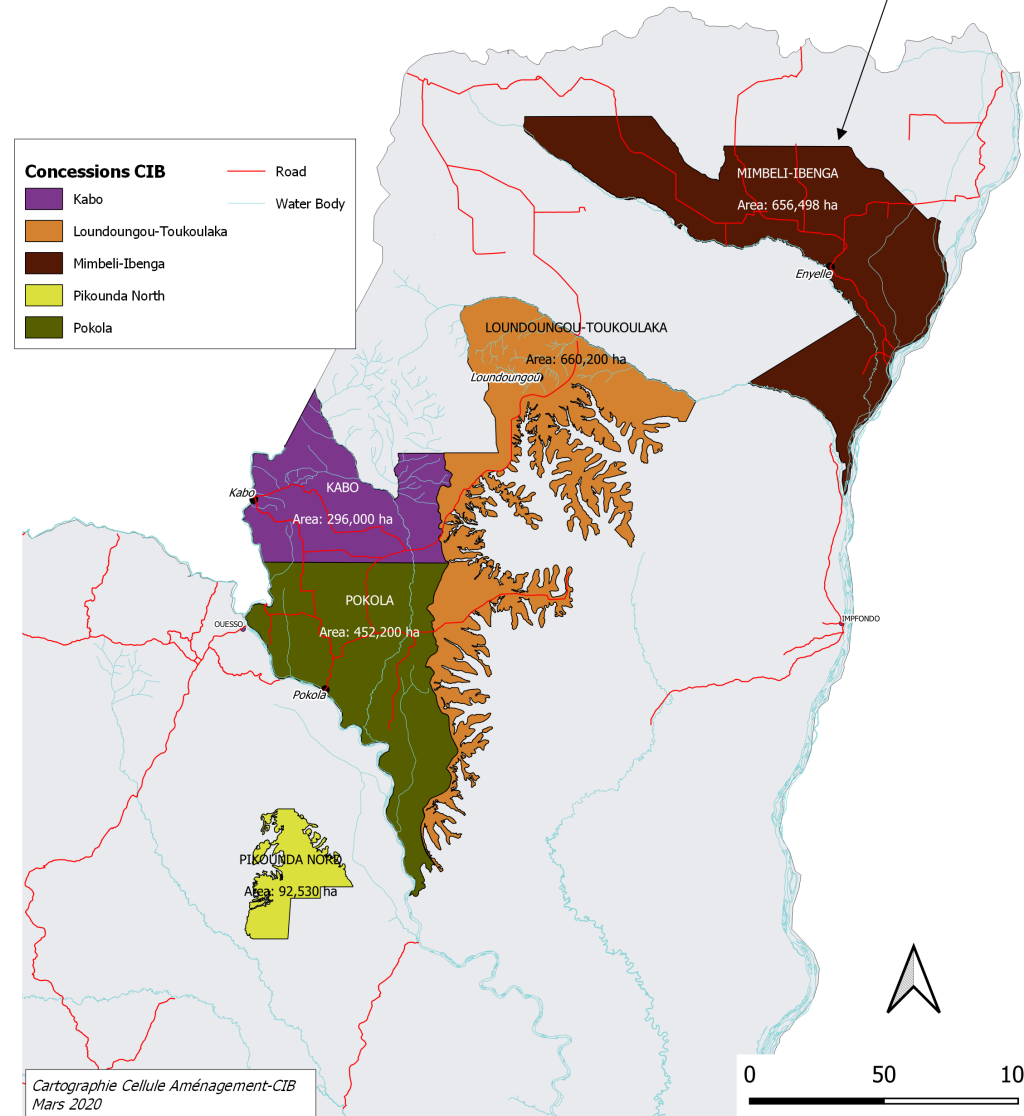
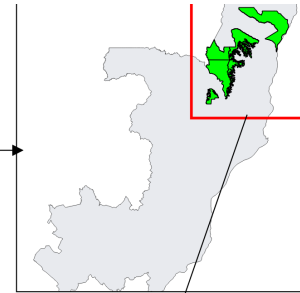
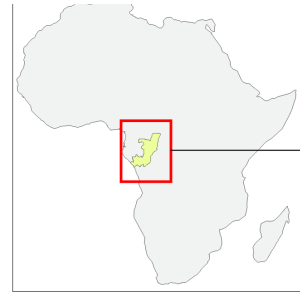
**500+**  
Pages of questionnaires filled while interviewing the local population.



**290**  
Species of trees documented.



**33**  
Species of mammals documented.



## History of FSC Certifications for CIB-Olam Concessions.

Our first certification that we received for Kabo in 2006 was also the first FSC certification ever, in the Republic of the Congo.

Pokola received the certification next, in 2008.

The certification for Loundougou was received in 2011.

The Concession of Pikounda has been a conservation area as a REDD + project.

The last of the five concessions of Mimbéli-Ibenga received the FSC certification in 2020.

And now, CIB-Olam is 100% FSC Certified.