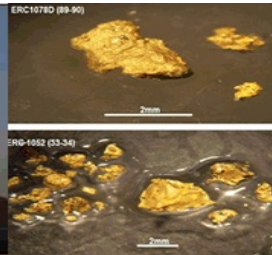




Tweet



Inscription pour voir ce que vos amis aiment.



- [Companies News](#)
- [Membership](#)
- [Burkina-emine](#)
 - [Burkina-emine philosophy](#)
- [Burkina Faso](#)
 - [History](#)
 - [Geography](#)
 - [Geology](#)
 - [Political Environment](#)
 - [State support institutions](#)
 - [Mining Ministry](#)
 - [BUMIGEB](#)
 - [IGB](#)
 - [ITIE](#)
 - [Codes and Regulations](#)
 - [Mining Codes](#)
 - [Environmental Codes](#)
 - [Fiscal Code](#)
 - [Labour Code](#)
 - [Customs Regulations](#)
 - [Energy](#)
 - [Thermic Energy](#)
 - [Hydro-Electricity](#)
 - [Solar Energy](#)
 - [Wind Energy](#)
 - [Communication](#)
 - [Accomodation](#)
 - [Internet](#)
 - [Telephone Network](#)
 - [Air Link](#)
 - [Rail Network](#)
 - [Road Network](#)
 - [Banks and Insurances](#)
- [Mineral Exploration](#)
 - [MME Welcome Message](#)
 - [Avanced Project](#)
 - [ACC DOSSI DEPOSIT \(0.85Moz\)](#)
 - [B2GOLD GAOUA DEPOSIT \(304.4Mt@0.32%Cu & 0.35g/t Au\)](#)
 - [B2GOLD KIAKA DEPOSIT \(5.868Moz\)](#)
 - [CENTAMIN KONKERA DEPOSIT \(3.254Moz\)](#)
 - [ENDEAVOUR VINDALOO DEPOSIT \(2.2Moz\)](#)
 - [GRYPHON BANFORA DEPOSIT \(4.89Moz\)](#)
 - [NORD GOLD RONGUEN DEPOSIT \(0.384Moz\)](#)
 - [PAN AFRICAN TAMBAO DEPOSIT \(20Mt @ 52%Mn\)](#)
 - [PREDICTIVE BONGOU DEPOSIT](#)
 - [ROXGOLD YARAMOKO DEPOSIT \(1.157Moz\)](#)
 - [SARAMA SOUTH HOUNDE DEPOSIT \(1.504Moz\)](#)
 - [SEMAFO NABANGA DEPOSIT \(0.66Moz\)](#)
 - [SEMAFO NATOUGOU DEPOSIT \(2.0Moz\)](#)
 - [TRUE GOLD KARMA DEPOSIT \(2.7Moz\)](#)
 - [WEST AFRICAN BOULSA DEPOSIT \(70.4Mt@0.2%Cu@0.3g/t Au@166g/t Mo @1.1g/t Ag\)](#)
 - [WEST AFRICAN TANLOUKA DEPOSIT \(1.15Moz\)](#)
 - [Mapping](#)
 - [Geological Maps](#)
 - [Tenements Map](#)
 - [Mining Map](#)
 - [Topography Map](#)
 - [Geophysical Maps](#)
 - [Usefull Substances map](#)
 - [Permitting Procedures](#)
 - [Exploration](#)
 - [Exploitation](#)
 - [Artisanal/semi mechanized](#)
- [Mining](#)
 - [Mining History](#)
 - [Operating mines](#)
 - [ACM KIERS DEPOSIT \(0.6Mt @ 45%Mn\)](#)
 - [AMARA KALSAKA DEPOSIT \(0.8Moz\)](#)
 - [AVOCET INATA DEPOSIT \(4.7Moz\)](#)

- [ENDEAVOUR YOUGA DEPOSIT \(1.3Moz\)](#)
- [GLENCORE PERKOA DEPOSIT \(6.72Mt @ 16.4%Zn\)](#)
- [IAMGOLD ESSAKANE DEPOSIT \(4.8Moz\)](#)
- [NEWMONT POURA DEPOSIT \(24t Au produced\)](#)
- [NORDGOLD BISSA DEPOSIT \(5.066Moz\)](#)
- [NORDGOLD TAPARKO DEPOSIT \(1.56Moz\)](#)
- [SEMAFO MANA DEPOSIT \(4.9Moz\)](#)
- [Production](#)
- [Artisanal Workings](#)
- [Quarries](#)
- [Mine closure](#)
-
- [HSE](#)
 - [Environmental Aspects](#)
 - [Bone of contention](#)
 - [Rehabilitation](#)
 - [Communities Relocation](#)
 - [Social Organisation](#)
 - [International Regulations](#)
-
- [Doing Business](#)
 - [Where to Invest in Burkina?](#)
 - [Hot spots](#)
 - [Prospectivity Analysis](#)
 - [Academic Publications](#)
-
- [Geoservices](#)
 - [Drilling Companies](#)
 - [Laboratories](#)
 - [Geophysical survey](#)
 - [Consulting](#)
 - [Mining Contractors](#)
 - [Suppliers](#)
 - [Others](#)
-
- [Training/Education](#)
 - [Geosciences](#)
 - [University of OUAGADOUGOU](#)
 - [University of FADA](#)
 - [2le Foundation](#)
 - [Job/Training](#)

[BECOME MEMBER OF MINING INDUSTRY PROFESSIONALS](#)

- [Team leader message](#)
-
- [Metals spot price](#)
-
- [Features](#)
-
- [Mining in the feminine](#)
-
- [Top 5 performance](#)
-
- [Forum](#)
-
- [Usefull links](#)
-
- [Geo's space](#)
-
- [Contact Us](#)
-
- [Security e-alert](#)
 - [Metal Spot](#)

Partners



Annual Archive

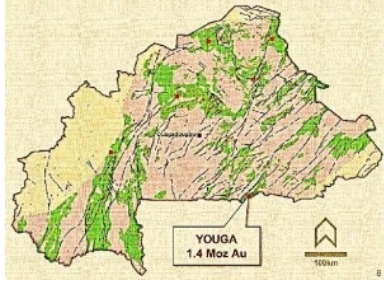
- [2017](#)
- [2016](#)
- [2015](#)
- [2014](#)

[New mining companies' breakthrough in Burkina Faso](#)
[INDUSTRIAL GOLD PRODUCTION IN BURKINA : 2015 HIGHLIGHTS AND 2016 OUTLOOK](#)
[New mining companies breakthrough in Burkina Faso](#)
[Natougou gold deposit, first pour for 2018](#)
[Burkina Faso: A record production of 1.17 million ounces of gold in 2014](#)

ENDEAVOUR YOUNGA DEPOSIT (1.3Moz)

12 November 2013

YOUNGA DEPOSIT



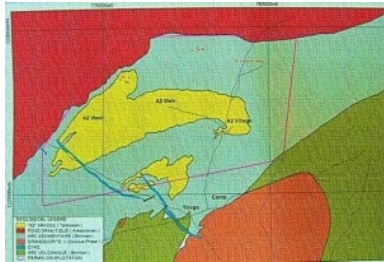
Project Location and Access

Younga project is located approximately 180km to the south - east of Ouagadougou, capital city of Burkina Faso just at the north of Burkina Faso / Ghana border. The main access to Younga is by paved road to Manga then by laterite road to younga village via zabre town.

Project History

- Exploration License was first granted in 1991 and exploration started which lead to the discovery of A2 anomalies.
- 1993: 400 peoples worked on 'Youga hill' now called Zergore site.
- Soils geochemistry was follow up by mapping, trenching, IP survey, RC drilling and diamond drilling
- Positive feasibility study and application for Exploitation license were submitted to the Burkina Faso Mines Ministry on 15th December 1999 by the Asshanti Goldfields / Echo Bay Mines JV.
- October 2006: Youga Feasibility Study Update was prepared using a gold price of US\$525 per ounce.
- Development of the Mine started in 2007 and production started in 2008 with first gold pours by Etruscan Resources on 3rd March.
- 2010: Endeavour becomes the majority shareholder in Etruscan.

Project Geology



The Younga project is located on the Northeastern extension of the Bole-Navrongo birimian greenstone Belt, which extends from Ghana into Burkina Faso

The belt is NE trending and geologically has similarities with Ghana birimian gold belts with weakly to moderately metamorphosed basics volcanic flows and intermediate to acid intrusions. The sediments are dominated by volcanoclastics and turbidites sequences. Late NW dolerite dykes cross cut the whole package. Tarkwaian rocks unconformably overly Birimian

Local geology is characterized by Tarkwaian arkoses units specific to Younga.

Gold mineralization at Younga is structurally controlled and hosted by Tarkwaian sedimentary rocks. All reserves are hosted by Tarkwaian sediments: predominantly arkosic sandstones with subordinate chloritic-schist.

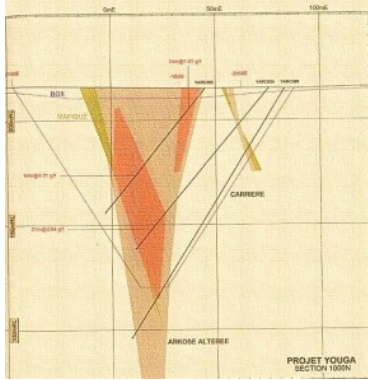
DEPOSIT TYPES



The Younga deposit is an Epigenetic, mesothermal gold deposit type characterized by a Strong structural control with pervasive silicification, quartz veining and sulphidation, although sulphide content is low.

In 'Youga hill' area typical of saddle reef gold deposits is suggested by structural interpretation.

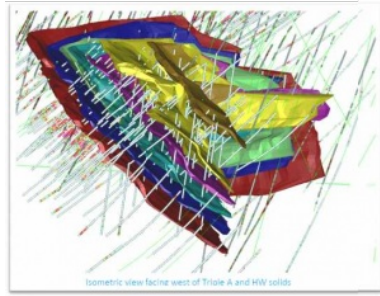
MINERALIZATION



At Youga, the gold mineralization is found in the silicified arkosic metasediments of Tarkwaian age. It is following a NW trending brittle fracture plunging at 40 degrees and cross cutting the ENE dominant fabric.

Typical alteration is characterized by quartz filling microfractures and weak pyritization. Alteration mineral assemblage comprises chlorite; sericite, silica, muscovite, ankerite, sulphides and gold.

The main mineralized bodies are located in the A2 main deposit and consists of gold bearing sulphides and arsenides. Sulphides comprise pyrite, arsenopyrite and galena.



Mineral Resource and Mineral Reserve

(source company web site / press releases)

Mineral Reserves as of 31 December 2011

Deposit	Proven		Probable			Total			
	kt	Au (g/t)	k Ozs	kt	Au (g/t)	k Ozs	kt	Au (g/t)	k Ozs
Youga ¹	2,238	2.4	176	2,396	1.8	141	4,634	2.1	317
Youga Satellites ²	1,279	1.4	59	1,396	1.6	71	2,674	1.5	131
Total	-	-	235	-	-	212	-	-	448

Mineral Resources including Reserves, at a 0.5g/t cut-off as of 31 December 2011

Deposit	Measured		Indicated		Measured & Indicated			Inferred	
	kt	Au (g/t)	k Ozs	kt	Au (g/t)	k Ozs	kt	Au (g/t)	k Ozs
Youga ¹	3,526	2.3	266	7,897	1.6	398	11,422	1.8	664
Youga Satellites ⁶	3,22	1.1	118	3,731	1.2	146	6,951	1.2	264
Ouaré ³	-	-	-	-	-	-	-	-	4,738
Total	-	-	384	-	-	544	-	-	928

¹ Technical Report and Update of Mineral Resources and Mineral Reserves for the Youga Gold Mine, Burkina Faso, West Africa, effective December 31, 2010 and dated March 15, 2011, prepared by A. de Freitas and K. Woodman, Qualified Persons not independent of Endeavour Mining Corporation, Depleted as of December 31, 2011.

² Youga Satellite Deposits, Internal Resource Estimates, prepared by AMEC under supervision of K. Woodman; Internal Reserve Estimates, prepared by SEMS under supervision of A. de Freitas Qualified Persons not independent of Endeavour Mining Corporation.

³ Ouaré Deposit, Internal Resource Estimate, dated June 16 2009 prepared by A. Mouton under supervision of K. Woodman Qualified Persons not independent of Endeavour Mining Corporation



NB: Most of the figures are modified from company public data

www.endeavourmining.com



12 November 2013

Leave a Reply

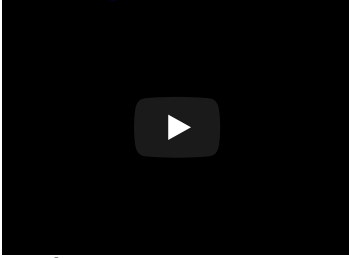
Name (required)

Mail (will not be published) (required)

Website

Submit Comment

>> [ZOOM MINE](#)
 [English](#)  [Français](#)



Member Login

Username or Email

Password

Remember Me

Login

[Forgot Password?](#)

[Join Us](#)

Search

Newsletter

Name

E-mail

Subscribe

Flash Info

To read on burkina-emine: [INDUSTRIAL GOLD PRODUCTION IN BURKINA 2016 HIGHLIGHTS AND 2017 CHALLENGES .](#)

[IAMGOLD best gold producer...](#)

[NORDGOLD best operating company in terms of exploration / endogenous growth...](#)

[SEMAFO best producer in terms of cash flow...](#)

Statistics

- Todays Visits: 3,182
- Yesterdays Visits: 3,664
- Last 30 Days Visits: 91,276
- Total Visits: 4,178,149

COMPANY

-
-
- ZOOM MINE
-

[Zoom mine 7](#)

[Zoom Mine N°6](#)

[Zoom Mine N° 05](#)

[Zoom Mine N° 04](#)

[Zoom Mine N°03](#)