



All the mining news by the industry professionals

- [Companies News](#)
- [Membership](#)
- [Burkina-emine](#)
  - [Burkina-emine philosophy](#)
- [Burkina Faso](#)
  - [History](#)
  - [Geography](#)
  - [Geology](#)
  - [Political Environment](#)
  - [State support institutions](#)
    - [Mining Ministry](#)
    - [BUMIGEB](#)
    - [IGB](#)
    - [ITIE](#)
  - [Codes and Regulations](#)
    - [Mining Codes](#)
    - [Environmental Codes](#)
    - [Fiscal Code](#)
    - [Labour Code](#)
    - [Customs Regulations](#)
  - [Energy](#)
    - [Thermic Energy](#)
    - [Hydro-Electricity](#)
    - [Solar Energy](#)
    - [Wind Energy](#)
  - [Communication](#)
    - [Accomodation](#)
    - [Internet](#)
    - [Telephone Network](#)
    - [Air Link](#)
    - [Rail Network](#)
    - [Road Network](#)
    - [Banks and Insurances](#)
- [Mineral Exploration](#)
  - [MME Welcome Message](#)
  - [Avanced Project](#)
    - [ACC DOSSI DEPOSIT \(0.85Moz\)](#)
    - [B2GOLD GAOUA DEPOSIT \(304.4Mt@0.32%Cu & 0.35g/t Au\)](#)
    - [B2GOLD KIAKA DEPOSIT \(5.868Moz\)](#)
    - [CENTAMIN KONKERA DEPOSIT \(3.254Moz\)](#)
    - [ENDEAVOUR VINDALOO DEPOSIT \(2.2Moz\)](#)
    - [GRYPHON BANFORA DEPOSIT \(4.89Moz\)](#)
    - [NORD GOLD RONGUEN DEPOSIT \(0.384Moz\)](#)
    - [PAN AFRICAN TAMBAO DEPOSIT \(20Mt @ 52%Mn\)](#)
    - [PREDICTIVE BONGOU DEPOSIT](#)
    - [ROXGOLD YARAMOKO DEPOSIT \(1.157Moz\)](#)
    - [SARAMA SOUTH HOUNDE DEPOSIT \(1.504Moz\)](#)
    - [SEMAFO NABANGA DEPOSIT \(0.66Moz\)](#)
    - [SEMAFO NATOUGOU DEPOSIT \(2.0Moz\)](#)
    - [TRUE GOLD KARMA DEPOSIT \(2.7Moz\)](#)
    - [WEST AFRICAN BOULSA DEPOSIT \(70.4Mt@0.2%Cu@0.3g/t Au@166g/t Mo @1.1g/t Ag\)](#)
    - [WEST AFRICAN TANLOUKA DEPOSIT \(1.15Moz\)](#)
  - [Mapping](#)
    - [Geological Maps](#)
    - [Tenements Map](#)
    - [Mining Map](#)
    - [Topography Map](#)
    - [Geophysical Maps](#)
    - [Usefull Substances map](#)
  - [Permitting Procedures](#)
    - [Exploration](#)
    - [Exploitation](#)
    - [Artisanal/semi mechanized](#)
- [Mining](#)
  - [Mining History](#)
  - [Operating mines](#)
    - [ACM KIERS DEPOSIT \(0.6Mt @ 45%Mn\)](#)
    - [AMARA KALSAKA DEPOSIT \(0.8Moz\)](#)
    - [AVOCET INATA DEPOSIT \(4.7Moz\)](#)

- [ENDEAVOUR YOUGA DEPOSIT \(1.3Moz\)](#)
- [GLENOCORE PERKOA DEPOSIT \(6.72Mt @ 16.4%Zn\)](#)
- [IAMGOLD ESSAKANE DEPOSIT \(4.8Moz\)](#)
- [NEWMONT POURA DEPOSIT \(24t Au produced\)](#)
- [NORDGOLD BISSA DEPOSIT \(5.066Moz\)](#)
- [NORDGOLD TAPARKO DEPOSIT \(1.56Moz\)](#)
- [SEMAFO MANA DEPOSIT \(4.9Moz\)](#)
- [Production](#)
- [Artisanal Workings](#)
- [Quarries](#)
- [Mine closure](#)
- 
- [HSE](#)
  - [Environmental Aspects](#)
  - [Bone of contention](#)
  - [Rehabilitation](#)
  - [Communities Relocation](#)
  - [Social Organisation](#)
  - [International Regulations](#)
- 
- [Doing Business](#)
  - [Where to Invest in Burkina?](#)
  - [Hot spots](#)
  - [Prospectivity Analysis](#)
  - [Academic Publications](#)
- 
- [Geoservices](#)
  - [Drilling Companies](#)
  - [Laboratories](#)
  - [Geophysical survey](#)
  - [Consulting](#)
  - [Mining Contractors](#)
  - [Suppliers](#)
  - [Others](#)
- 
- [Training/Education](#)
  - [Geosciences](#)
  - [University of OUAGADOUGOU](#)
  - [University of FADA](#)
  - [2le Foundation](#)
  - [Job/Training](#)

#### [BECOME MEMBER OF MINING INDUSTRY PROFESSIONALS](#)

- [Team leader message](#)
- 
- [Metals spot price](#)
- 
- [Features](#)
- 
- [Mining in the feminine](#)
- 
- [Top 5 performance](#)
- 
- [Forum](#)
- 
- [Usefull links](#)
- 
- [Geo's space](#)
- 
- [Contact Us](#)
- 
- [Security e-alert](#)
  - [Metal Spot](#)

Partners



Annual Archive

- [2017](#)
- [2016](#)
- [2015](#)
- [2014](#)

[New mining companies' breakthrough in Burkina Faso](#)  
[INDUSTRIAL GOLD PRODUCTION IN BURKINA : 2015 HIGHLIGHTS AND 2016 OUTLOOK](#)  
[New mining companies breakthrough in Burkina Faso](#)  
[Natougou gold deposit, first pour for 2018](#)  
[Burkina Faso: A record production of 1.17 million ounces of gold in 2014](#)

## AMARA KALSAKA DEPOSIT (0.8Moz)

5 November 2013

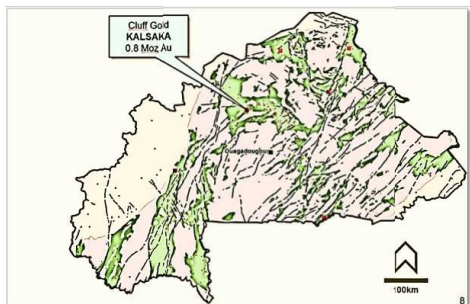
### **KALSAKA DEPOSIT**

#### **Project Location and Access**



Kalsaka is a producing gold mine in Burkina Faso operated by Amara Mining. Amara acquired the neighboring Sega project which is due to begin production in 2013.

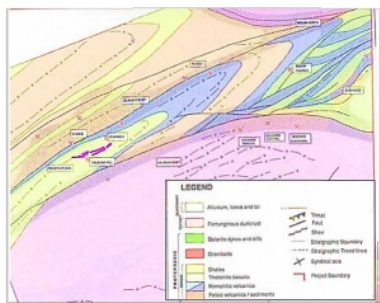
Kalsaka gold Mine is located in the Yatenga Province, approximately 150km northwest of Ouagadougou the capital city of Burkina Faso. From Ouagadougou, access to the site is via 100 km of paved road and a further 50km of gravel roads to the Mine site. Sega prospect is located about 20km north of Kalsaka.



#### **Project History**

- © Exploration activity at Kalsaka by mining industry commenced in 1998 when Cluff Mining, signed its joint venture agreement with IMAR-B.
- © The Kalsaka exploration project was acquired by Cluff Gold from Cluff Mining in 2004.
- © Various exploration works conducted by Cluff Mining throughout 1998-1999 culminated in a feasibility study completed in 2005 by RSG Global and updated in 2006.
- © SRK Consulting made a technical review in 2008, based on RSG's proposed operations plans with updated costs.
- © The operation achieved its first gold pour in October 2008 and was fully commissioned in June 2009.
- © In February 2012, Cluff Gold announced conditional acquisition of the Sega project from Orezone.
- © 01 October 2012 Cluff Gold announces that it has changed its name to Amara Mining plc.

#### **Geology**



The Kalsaka licence area is located in the northern portion of the Boromo belt that forms a major Pre-Cambrian aged supracrustal belt. Kalsaka is positioned near to an inflection point where the N-S trending Boromo belt bends into a NE-SW trending belt. The birimian rocks at Kalsaka comprise intermediate to mafic volcanics and volcanosediments, subvolcanic sills, minor felsic tuffs and bedded chert.

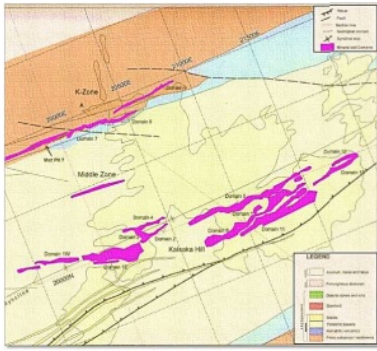
The stratigraphic succession at Kalsaka, from oldest to youngest, is as follows:

- felsic volcano-sedimentary sequence;
- ultramafic flows;
- tholeiitic basaltic flows; and
- intraflow shale horizons within the tholeiitic basalts.

The whole is intruded by early proterozoic granitoid and late Proterozoic dolerite dykes.

The stratigraphy at Kalsaka is isoclinally folded into a shallow W-SW plunging syncline. The most prominent ore bodies are located within, or associated with, shears located near the fold axis. The dominant movement sense along the shear zones is dextral strike slip with a minor thrusting component.

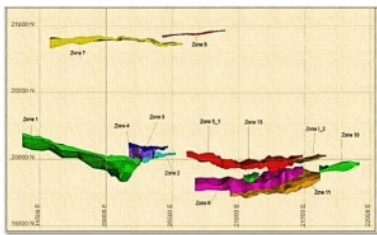
**DEPOSIT TYPES**



The mineralization at Kalsaka Hill occurs in two styles related to the shear zones.

- The zones of shear hosted mineralization
- The stockwork style mineralization

**MINERALIZATION**



Gold mineralization is hosted in narrow shear zones that contain thick quartz veins with brecciated margins hosting the highest grades

The zones of shear hosted mineralization are consistent with the regional fabric and are parallel with the synclinal axis with conformable quartz veining within sericite-kaolinite zones.

The stockwork style mineralization is associated with quartz veins or to shear zones margins. It is developed in less deformed, more competent rocks. Where associated with solitary veins these mineralized zones may be developed slightly oblique to the regional fabric.

At K-Zone the mineralization is along the highly deformed contact between the ultramafic rocks and volcano-sedimentary sequences. The mineralization is associated with large quartz veins with intense sericite-fuchsite-carbonate alteration. The veins are slightly offsetted by a late high angle fault.

**Mineral Resource and Mineral Reserve**

At 31 December 2012, Kalsaka had an estimated 38,000 ounces of proven and probable reserves, 225,000 ounces of gold in the measured and indicated resources, and 178,000 ounces of gold in the inferred category, in Kalsaka area. In addition the Sega project had 450366 Oz of indicated resources and 147344Oz of Inferred resources to the project. (Source company web site / press releases).

KALSAKA /SEGA	KALSAKA			SEGA		
	tonnes	grade (g/t)	contained ounces	tonnes	grade (g/t)	contained ounces
Proven Reserves#	200,000	1.5	11,000			
Probable Reserves	600,000	1.3	27,000			
Proven & Probable	800,000	1.4	38,000			
Measured Resources*	1,000,000	1.32	44,000			
Indicated Resources	6,100,000	1.18	269,000	8,300,000	1.7	450,366
Measured + Indicated	7,100,000	1.19	225,000	8,300,000	1.7	450,366
Inferred Resources	4,400,000	1.25	178,000	2,900,000	1.6	147,344
<b>Resources total</b>	<b>11,500,000</b>	<b>1.37</b>	<b>403,000</b>	<b>11,200,000</b>	<b>1.67</b>	<b>597,710</b>



NB: Most of the figures are modified from company public data [www.amaramining.com](http://www.amaramining.com)

 Tweet

5 November 2013

### Leave a Reply

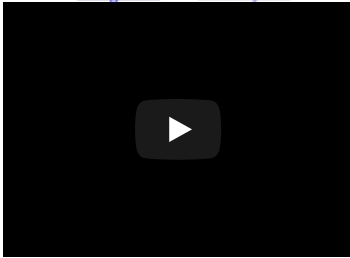
Name (required)

Mail (will not be published) (required)

Website

Submit Comment

>> [ZOOM MINE](#)  
 [English](#) [Français](#)



Member Login  
Username or Email

Password

Remember Me

Login

[Forgot Password?](#)  
[Join Us](#)

Search

Newsletter

Name

E-mail

Subscribe

Flash Info

To read on burkina-emine: [INDUSTRIAL GOLD PRODUCTION IN BURKINA 2016 HIGHLIGHTS AND 2017 CHALLENGES .](#)

[IAMGOLD best gold producer...](#)  
[NORDGOLD best operating company in terms of exploration / endogenous growth...](#)  
[SEMAFO best producer in terms of cash flow...](#)

Statistics

- Todays Visits: 3,275
- Yesterdays Visits: 3,664
- Last 30 Days Visits: 91,369
- Total Visits: 4,178,242

COMPANY

- 
- 
- ZOOM MINE
- 

[Zoom mine 7](#)

[Zoom Mine N°6](#)

[Zoom Mine N° 05](#)

[Zoom Mine N° 04](#)

