



Kokoya Gold Mine,
Republic of Liberia

September 2017



Kokoya Gold Mine – Key Facts



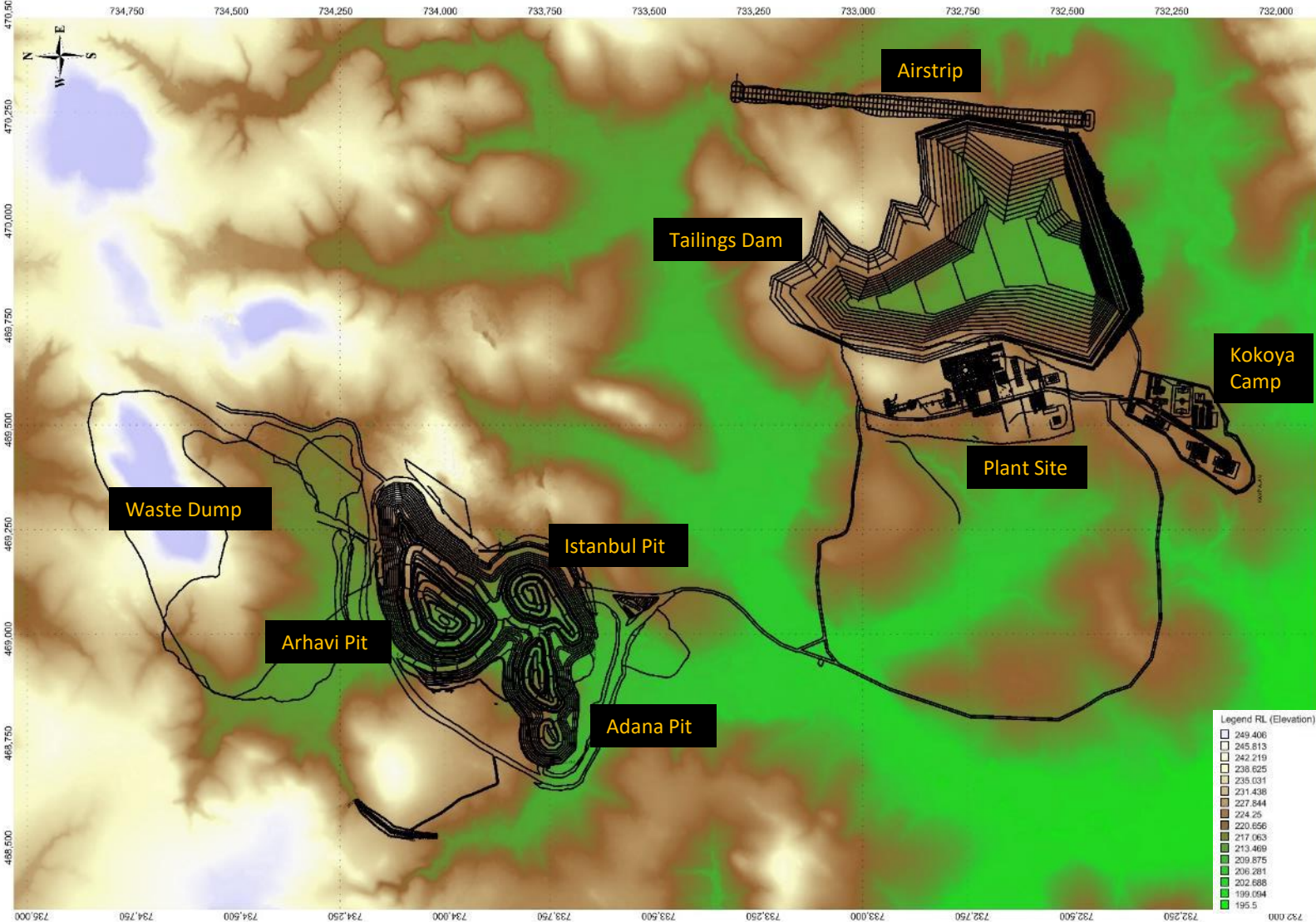
- ✓ Acquired from Amlib Holdings Plc in April 2014 at PFS stage
- ✓ Mine designed, constructed and in operation approximately 2 years after acquisition with gold production commencing in May 2016
- ✓ Three stage primary jaw, rod mill and ball mill
- ✓ Ball mills design – 65 tph – 1.3 MW drive
- ✓ Mill Capacity 0.75 Mtpa crushed ore
- ✓ Conventional gravity circuit with Knelson concentrator
- ✓ CIL circuit
- ✓ 92 – 95% recovery overall
- ✓ TSF – Fully lined and waste rock perimeter wall



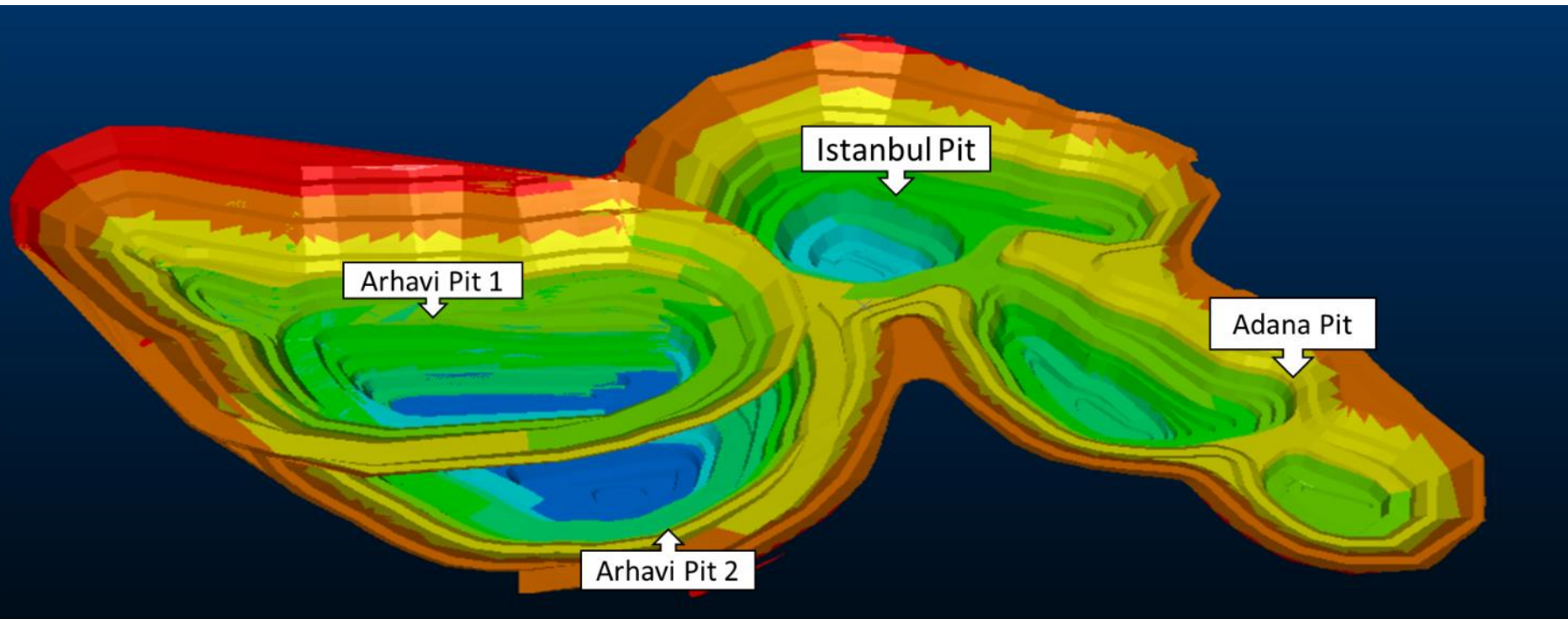
Kokoya Gold Mine – Site Layout



Kokoya Gold Mine - Site Layout

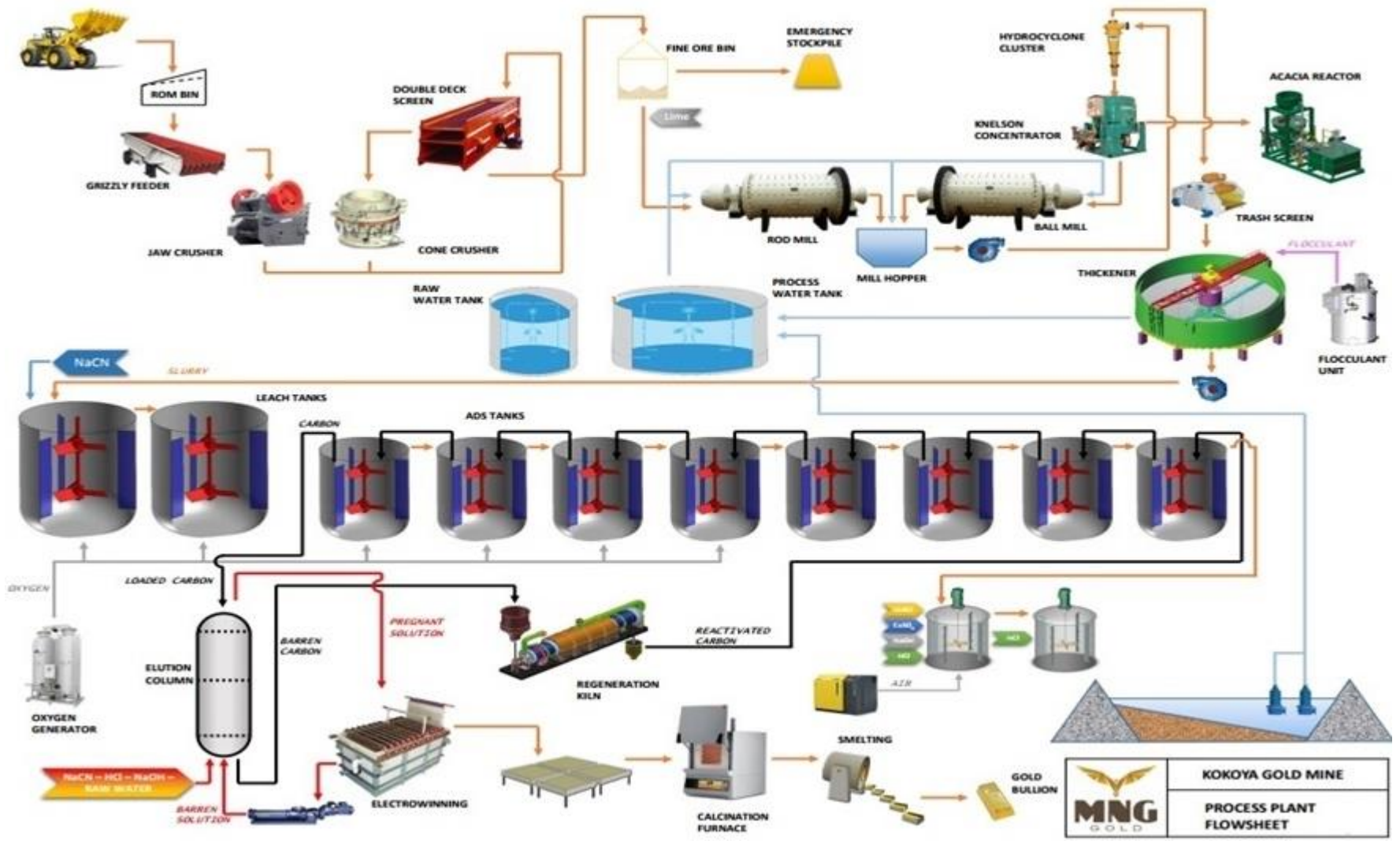


Mining Sequence



Pit	Q1 17	Q2 17	Q3 17	Q4 17	Q1 18	Q2 18	Q3 18	Q4 18	
Arhavi 1	█								
Arhavi 2			█						
Adana					█				
Istanbul	█								

Kokoya Gold Mine - Process Plant Flowsheet

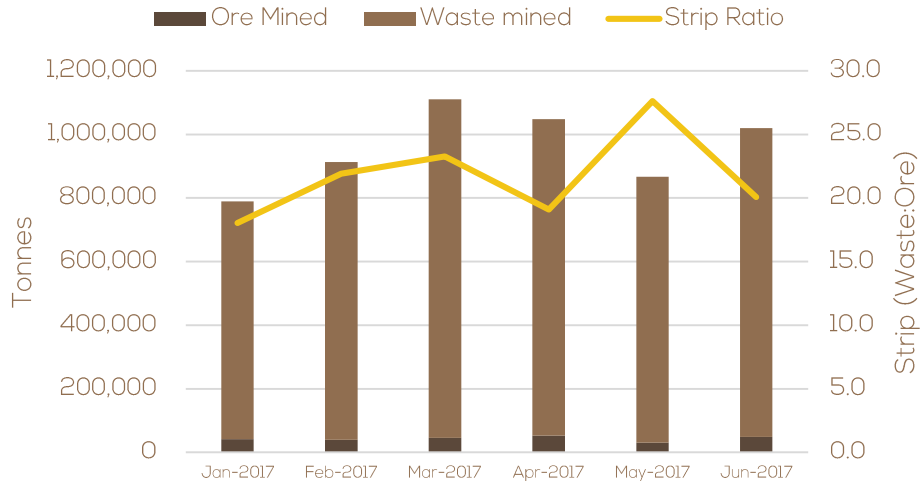


	KOKOYA GOLD MINE
	PROCESS PLANT FLOWSHEET

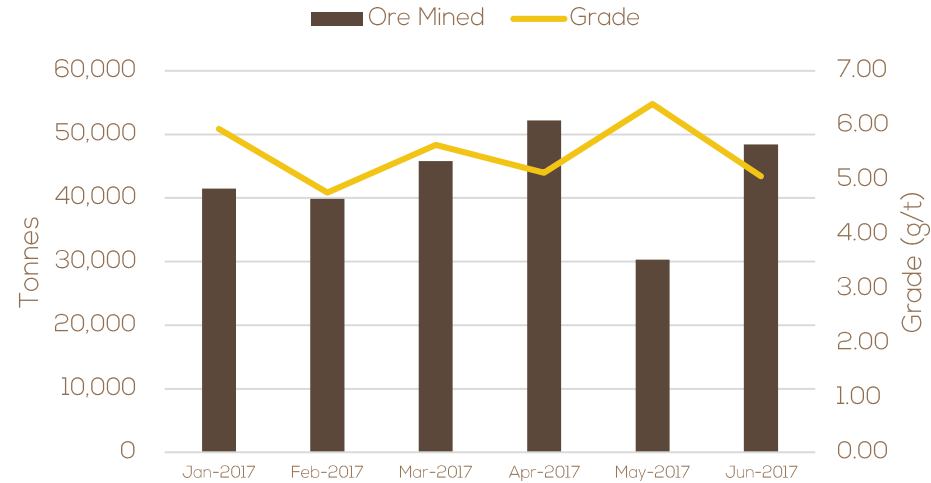
Mining and Processing Performance



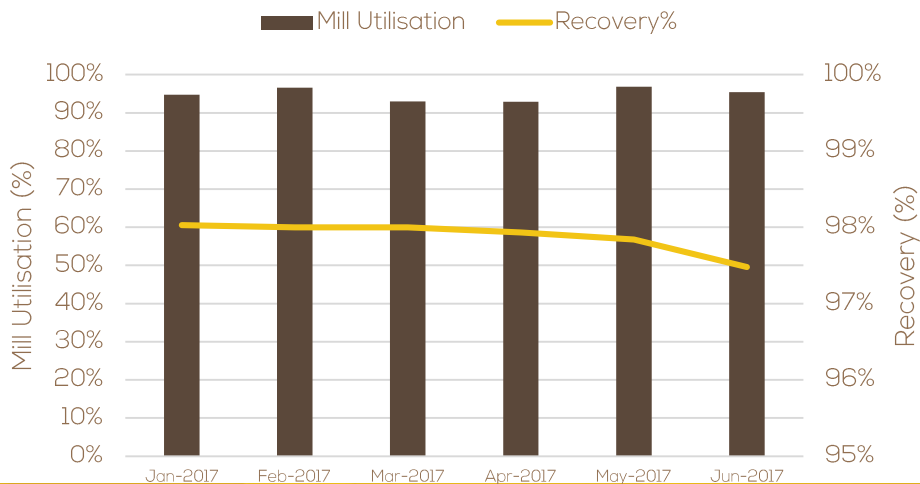
Total Tonnes Mined



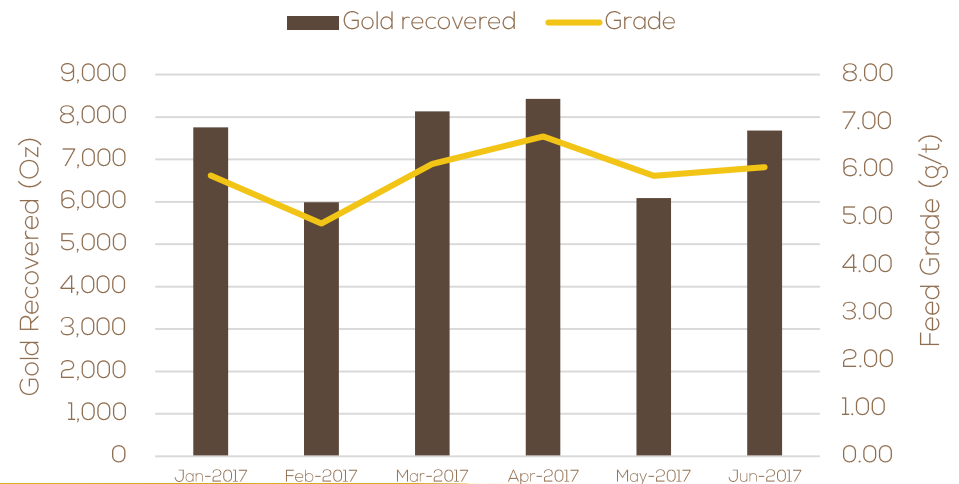
Ore Tonnes Mined and Head Grade



Mill Utilisation



Ounces Produced and Feed Grade





AVESORO

◆ **HOLDINGS** ◆

Registered Office - Wellington House, 17 Union Street, St Helier, JE2 3RF, Jersey, Channel Islands

Tel: +44 (0) 1534 828 430 | **Email:** contact@avesoro.com

www.avesoroholdings.com