



ENG



---

COMPANY OVERVIEW

MISSION AND VISION

STRUCTURE

BUSINESS PROFILE

CONTACTS

---

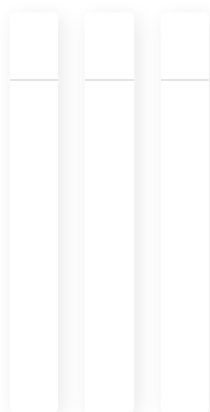
**Ilim  
Group is  
the  
leader  
in the  
Russian  
pulp  
and  
paper  
industry  
and one  
of the  
industry  
leaders  
globally**

Since 2007,  
International Paper  
has been Ilim  
Group's strategic  
partner within the  
joint venture.

## Business assets

Ilim Group has three  
largest pulp and  
paper mills and two  
modern corrugated  
box plants. The  
business assets are  
located in  
Koryazhma  
(Arkhangelsk  
Oblast), Bratsk and  
Ust-Ilimsk (Irkutsk  
Oblast), Kommunar  
(Leningrad Oblast),  
and Dmitrov  
(Moscow Oblast).

**Pulp and  
paper mills**



**Corrugated  
box  
plants**



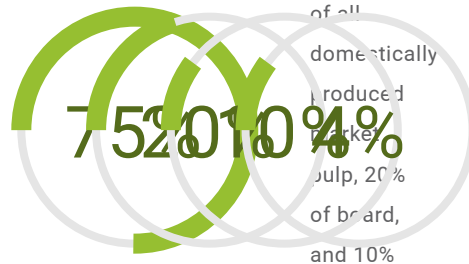
Sibgirobum  
Engineering  
and  
Design  
Institute

<https://sibgirobum.ru/>

Irkutsk
Consulting services
Pre-engineering
Engineering
Development of environmental action plans

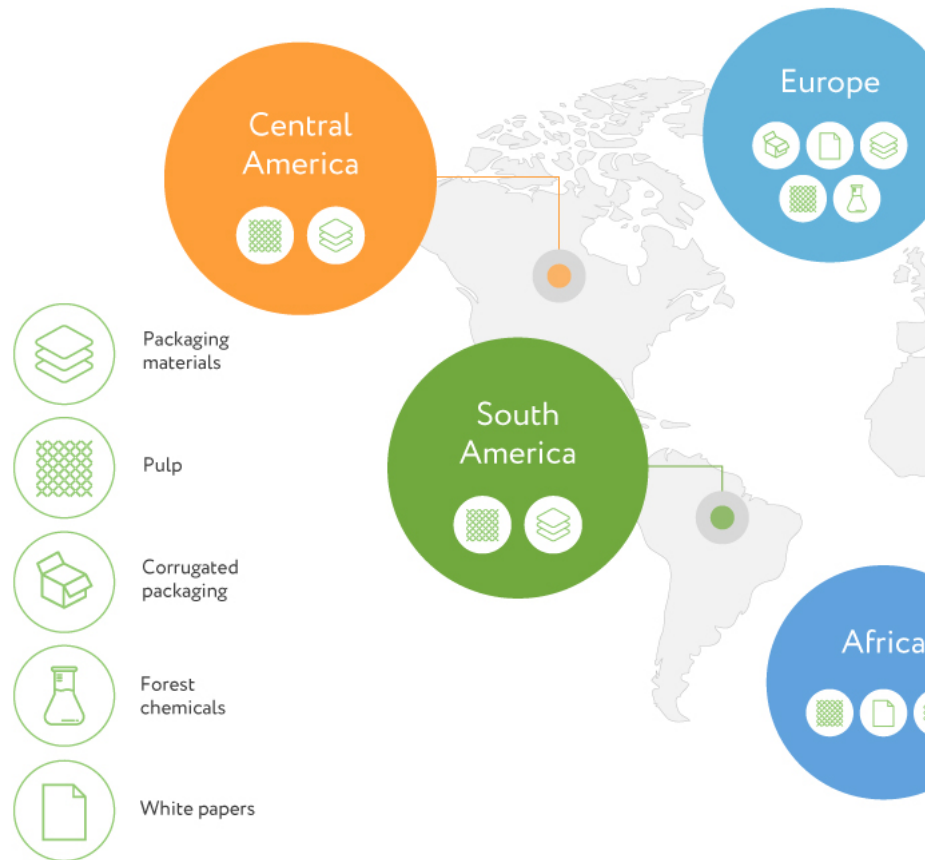
Offices  
and  
representative  
offices

Offices
Central office in St. Petersburg
Beijing Office
Representative offices
Arkhangelsk
Irkutsk



2,2 967,020,000,000  
 mln tons tons tons  
 tons of board of paper corrugated Total  
 of per per per annual  
 pulp year year year pulp and  
 per year year year paper  
 year output  
 exceeds  
 3.6  
 million  
 tons.

## Sales markets



## Ilim Group is the largest investor in the Russian pulp

In 2014, the Company completed implementation of its two large-scale investment projects involving construction of new facilities and upgrade of the existing mills in Bratsk (Irkutsk

# and paper industry

## COMPLETED

## PROJECTS

## INVESTMENT PLANS

Oblast) and Koryazhma (Arkhangelsk Oblast) with CAPEX of approximately USD 2 bln.

The mills are now fully ramped up and ensure stable operation.

The Company's investment plans through 2020 are related to sustainable development of the operating sites not only in terms of increasing production output, but also through business diversification and product portfolio development.

1950



1953

USSR Cabinet Council established a project and general outlay of Kotlass Pulp and Paper Mill's

construction (Arkhangelsk region). The first stage of the mill was started in 1961.

- ABOUT IILIM GROUP
- SUSTAINABLE DEVELOPMENT
- LOCATIONS
- NEWSROOM
- CAREER
- Koryazhma
- Ust-Ilimsk
- Bratsk
- Health and Safety
- Environment
- Mission and Vision
- Structure
- Business profile
- Contacts
- Newsroom
- Career in Ilim Group
- Photo gallery
- Open positions
- Video
- Responsible forest management
- Social responsibility

PRODUCTS SHAREHOLDERS PURCHASES

- List of products
- Pulp
- Board
- Paper
- Wood chests
- Round wood
- Register Holder
- Shareholders
- Dividends
- Information for suppliers
- Information for contractors
- Information disclosure

© 2008–2021 Ilim Group

Ethics Hotline 8 (800) 500-70-77

We are in social networks

Made by Func

English

8 (800) 200-25-65

