



MIGHTY EARTH



RAPID RESPONSE

Soy & Cattle Report

Report 18: 2020 Fires in Brazil
September 2020



Prepared with

aidenvironment
Waxman

Executive Summary

This Rapid Response Special Report on Brazilian Fires (Part 2) highlights fire events in the Amazon and Cerrado biomes in Brazil during August 2020 for 12 cases. It builds on a similar Rapid Response report on Brazilian fires that was published in September 2019 (1). All cases selected were mentioned in previous Rapid Response reports on deforestation that occurred between December 14, 2019 and July 25, 2020 (2), totaling 20,064 ha (Table 1). Satellite images suggest that farms were cleared of native vegetation and are now being prepared for pasture or crop production with fire, affirming that deforestation for agricultural commodities is a key driver of fire in Brazil (3). The report confirms that soy traders and cattle processors with zero-deforestation commitments purchase from farms that are not only clearly engaging in deforestation and land conversion, but that also had fire outbreaks last month.

Table 1: Farms with detected fire in Brazil in August 2020

Biome	Municipality, State	Farm name	Deforestation (ha)	Report	Page #	Supply chain links
Cerrado	Correntina, Bahia	Fazenda Integrada (Fazenda Cabeceira Grande II and Fazenda Ca-pão Bonito)	724	11	3	Bunge, Cargill and COFCO
Cerrado	Uruçuí, Piauí	Fazenda Serra Branca I	3,784	11	4	Bunge and Cargill
Cerrado	Carolina, Maranhão	Fazenda Paraíso	68	11	5	Cargill
Cerrado	São Desidério, Bahia	Fazenda Eliane (Fazenda Rio Bonito e Outras and Fazenda Rio Grande)	1,419	11	6	Bunge and Cargill
Cerrado	Luís Eduardo Magalhães, Bahia	Fazenda Bananal, Fazenda Bananal VIII, IX, and X	5,213	4, 6, 13, 14	7	Bunge and Cargill
Cerrado	Jaborandi, Bahia	Fazenda Esplendor and Fazenda Novo México	3,737	13	8	Louis Dreyfus
Cerrado	Jaborandi, Bahia	Fazenda Butiatuvinha e Outra	350	13	9	Cargill
Cerrado	Carolina, Maranhão	Fazenda Serrinha (Fazenda Horizonte)	845	13	10	None found
Cerrado	Balsas, Maranhão	Fazenda Primavera	1,344	14	11	None found
Amazon	São Félix do Xingu, Pará	Fazenda Lagoa do Triunfo IV and V	929	4, 6, 14, Fire Report 2019	12	JBS, Marfrig and Minerva
Cerrado	Diamantino, Mato Grosso	Fazenda Bananal	128	16	13	Bunge and Minerva
Amazon	União do Sul, Mato Grosso	Fazenda Dona Mercedes Sede II Lote São José	1,523	16	14	None found
Total			20,064			

Source: Compiled by Aidenvironment. The 12 cases were ultimately selected out of 35 cases of detected fire by NASA based on visual confirmation of the fires, size of the fires, and supplier-trader relationships.

- (1) http://www.mightyearth.org/wp-content/uploads/Rapid-Response_Soy-and-Cattle_Special-Report_Fires_Sept-2019.pdf#new_tab
- (2) <http://www.mightyearth.org/rapid-response-soy-cattle>
- (3) <https://chainreactionresearch.com/report/deforestation-for-agricultural-commodities-a-driver-of-fires-in-brazil-in-donesia-in-2019/>

1. Fazenda Integrada (Fazenda Cabeceira Grande II and Fazenda Capão Bonito) - Correntina, Bahia

Alert Imagery (before and after clearance)

31 Dec 2019



Source: European Union; contains modified 2019 data processed with EO Browser Copernicus Sentinel software

24 Feb 2020



Source: European Union; contains modified 2020 data processed with EO Browser Copernicus Sentinel software

12 Aug 2020



Source: European Union; contains modified 2020 data processed with EO Browser Copernicus Sentinel software

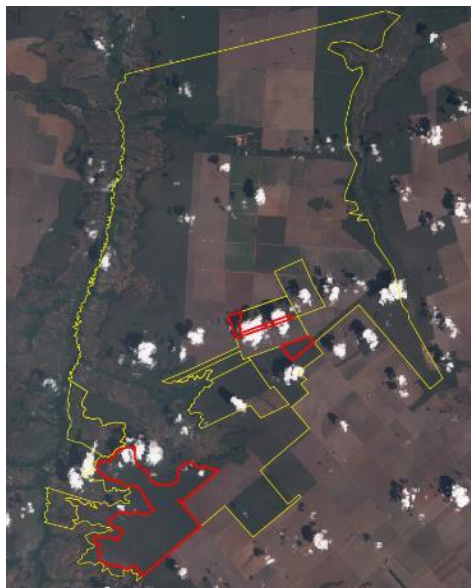
Fazenda Integrada consists of properties Fazenda Cabeceira Grande II and Fazenda Capão Bonito, which showed 724 ha of deforestation between December 31, 2019 and February 24, 2020 (1). Following the deforestation, NASA detected fires in Fazenda Integrada on August, 12, 2020 (2). In response to Rapid Response report #11 that featured Fazenda Integrada, Cargill and Bunge indicated buying either directly or indirectly from the property, while COFCO indicated having supplier relationships with the producer but not the property. The owner of the farm owns two companies that distribute and sell soy and cotton. He was fined in 2016 for violating an environmental embargo on the property Fazenda Santa Cruz located 5 km away from Fazenda Integrada in Correntina (BA) (3).

- (1) http://www.mightyearth.org/wp-content/uploads/Rapid-Response_Soy-and-Cattle_Report-11.pdf
- (2) <https://firms.modaps.eosdis.nasa.gov/download/>
- (3) <http://dadosabertos.ibama.gov.br/dataset/termos-de-embargo>

Alert Imagery (before and after clearance)

21 Dec 2019

30 Mar 2020



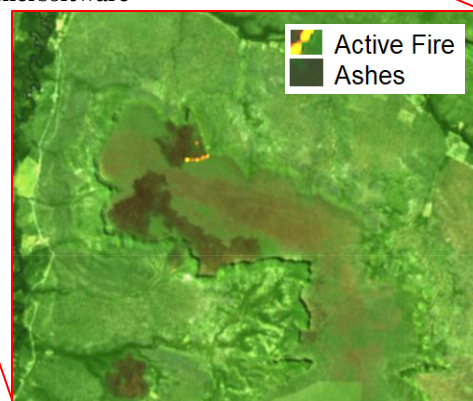
Source: European Union; contains modified 2019 data processed with EO Browser Copernicus Sentinel software



Source: European Union; contains modified 2020 data processed with EO Browser Copernicus Sentinel software

17 Aug 2020

Source: European Union; contains modified 2020 data processed with EO Browser Copernicus Sentinel software



Fazenda Serra Branca I is a 52,950 ha farm owned by Serra Branca Agrícola (1), part of Grupo Tomazini and Nutrizia/Friato Alimentos. Grupo Tomazini is involved in corn, soy, and animal feed production, and operate warehouses and poultry slaughterhouses (2). Between 21 December 2019 and 30 March 2020, 3,784 ha of native vegetation (wooded savanna) were cleared on the farm (3). Subsequently, on August 17, 2020, NASA detected fires on Fazenda Serra Branca I (4). Grupo Tomazini is associated with an illegal land grabbing case, reportedly for buying land from alleged land grabber João Batista Fernandes (5). In response to Rapid Response report #11 that featured the Serra Branca case, Bunge reported being directly or indirectly connected to Serra Branca and Cargill reported to have this supplier registered in their system. However, Cargill stated “there is no negotiation history with the producer or farm.”

(1) <https://sigef.incra.gov.br/consultar/parcelas/>

(2) <https://friato.com.br>

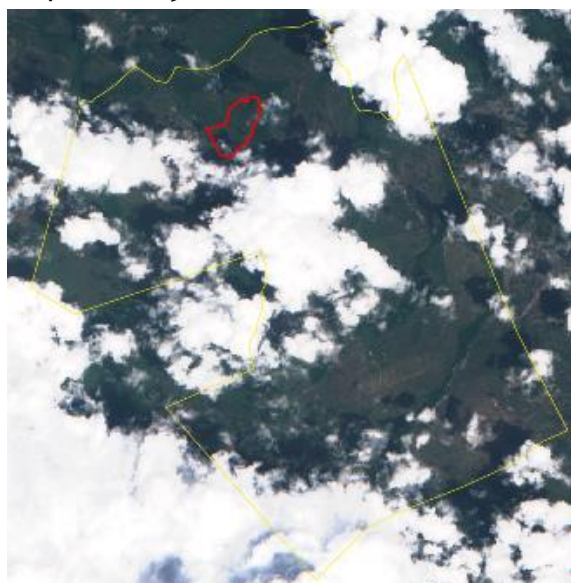
(3) http://www.mightyearth.org/wp-content/uploads/Rapid-Response_Soy-and-Cattle_Report-11.pdf

(4) <https://firms.modaps.eosdis.nasa.gov/download/>

(5) <http://www.portalgilbues.com.br/2017/03/advogados-revelam-que-ha-gente-poderosa.html>

Alert Imagery (before and after clearance)

14 Dec 2019



Source: European Union; contains modified 2019 data processed with EO Browser Copernicus Sentinel software

07 Feb 2020



Source: European Union; contains modified 2020 data processed with EO Browser Copernicus Sentinel software



20 Aug 2020

Source: European Union; contains modified 2020 data processed with EO Browser Copernicus Sentinel software

Fazenda Paraíso in Carolina, Maranhão is part of Grupo Lund – led by alleged land grabber and São Paulo businessman Lund Antônio Borges. In 2005, he was on Brazil’s Labor Ministry’s blacklist for slave labor. His assets are worth at minimum BRL 12.4 million and he owns approximately 33,000 hectares of land in the Bico do Papagaio region in North Tocantins (1). Rapid Response noted 68 ha of deforestation inside a declared Legal Reserve between December 14, 2019 and February 7, 2020 on his farm Fazenda Paraíso (2). The clearance was followed by fire detected by NASA on August 20, 2020 (3). Cargill noted having a relationship with this producer but stated that their “due diligence did not find indication of illegal activity.” Moreover, they stated to have “not negotiated with this supplier/farm in this harvest.”

- (1) <https://www.novacultura.info/single-post/2015/05/02/Lavrador-é-baleado-no-Bico-do-Papagaio>
- (2) http://www.mightyearth.org/wp-content/uploads/Rapid-Response_Soy-and-Cattle_Report-11.pdf
- (3) <https://firms.modaps.eosdis.nasa.gov/download/>

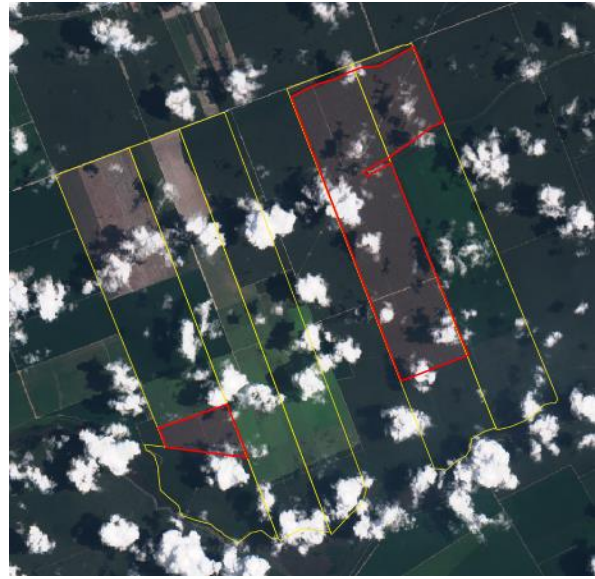
Alert Imagery (before and after clearance)

16 Dec 2019



Source: Source: European Union; contains modified 2019 data processed with EO Browser Copernicus Sentinel software

19 Feb 2020



Source: European Union; contains modified 2020 data processed with EO Browser Copernicus Sentinel software



27 Aug 2020

Source: European Union; contains modified 2020 data processed with EO Browser Copernicus Sentinel software

A total of 1,419 ha of forested savanna were cleared between December 16, 2019, and February 19, 2020 on Fazenda Rio Bonito e Outras and Fazenda Rio Grande (1). The farms – collectively referred to as Fazenda Eliane – are linked to Grupo Eliane, an agribusiness company active in soy, cotton, and corn production. The group consists of sub-units Agropecuária Eliane, Sementes Eliane, Sementes e Algodoeira Eliane (2, 3). One of the group’s companies, Sementes Eliane, sells seeds to soy producers such as SLC Agrícola and Synagro Comercial Agrícola (4, 5). In 2014, the group sold cotton to Glencore (6) but their current relationship is unclear. In addition, both Bunge and Cargill reported to have a direct or indirect supplier relationship with the producer and/or farm. NASA detected fires on Fazenda Eliane on August 27, 2020 in the previously deforested area (7).

- (1) http://www.mightyearth.org/wp-content/uploads/Rapid-Response_Soy-and-Cattle_Report-11.pdf
- (2) <http://www.sintegra.gov.br>
- (3) <https://cnpj.services/23750968000130/agropecuaria-eliane-ltda>
- (4) <https://br.reuters.com/article/businessNews/idBRKBN1GY3BQ-OBRBS>
- (5) <http://sementeseliane.com.br/>
- (6) <https://www.conab.gov.br>
- (7) <https://firms.modaps.eosdis.nasa.gov/download/>

Alert Imagery (before and after clearance)

05 March 2020



Source: European Union; contains modified 2020 data processed with EO Browser Copernicus Sentinel software

29 May 2020



Source: European Union; contains modified 2020 data processed with EO Browser Copernicus Sentinel software



12 Aug 2020

Source: European Union; contains modified 2020 data processed with EO Browser Copernicus Sentinel software

A group of properties called Fazenda Bananal are registered under Agrifirma Brasil (1). Fazenda Bananal and Fazenda Bananal X (Fazenda Sertimob) are officially registered under Grupo Sertaneja, but are linked to Agrifirma. Agrifirma Brazil officially merged with BrasilAgro in 1Q20, but already began the process of selling a group of Bananal farms to BrasilAgro in 2019 (2, 3). Between March 5, 2020 and May 29, 2020, 3,634 ha were cleared on Fazenda Bananal VIII (2). From April 4, 2020, to June 28, 2020, another 1,579 ha were cleared on Fazenda Bananal and Fazenda Bananal X (3). NASA detected fires on these properties on August, 12, 2020 (4). Cargill stated in response to earlier Rapid Response reports that it purchased soy from Fazenda Bananal VIII and from a farmer who leases an area inside Fazenda Bananal IX. This is likely Radoll Agropecuária (5) who supplied soy from Fazenda Bananal to Cargill and CCAB Agro in the 2018/2019 harvest season (6). Bunge also confirmed sourcing from Fazenda Bananal in response to Rapid Response Report 14.

(1) <http://www.seja.ba.gov.br/mapas/interativos>

(2) http://www.mightyearth.org/wp-content/uploads/RR_Report_13_June_2020.pdf

(3) http://www.mightyearth.org/wp-content/uploads/RR_Report_June_2020.pdf

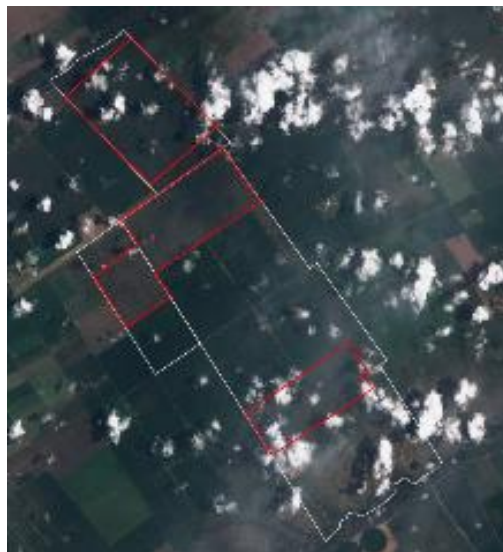
(4) <https://firms.modaps.eosdis.nasa.gov/download/>

(5) http://www.mightyearth.org/wp-content/uploads/RR_Report_13_June_2020.pdf

(6) Un disclosed invoices

Alert Imagery (before and after clearance)

14 February 2020

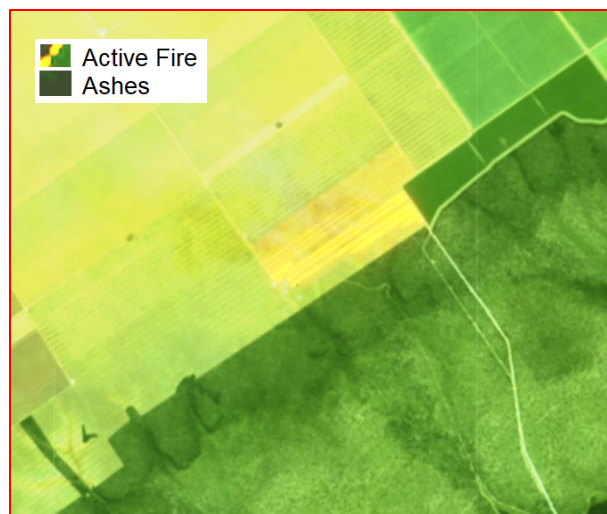


Source: European Union; contains modified 2020 data processed with EO Browser Copernicus Sentinel software

29 May 2020



Source: European Union; contains modified 2020 data processed with EO Browser Copernicus Sentinel software



03 Jul 2020

Source: European Union; contains modified 2020 data processed with EO Browser Copernicus Sentinel software

CalyxAgro, owner of the two farms - Fazenda Esplendor and Fazenda Novo México - is the subsidiary/land investment fund of Louis Dreyfus Commodities (LDC) in Latin America (1, 2). The subsidiary has received financial loans up to 60 to 70 million USD from financial giants American International Group and KPS Capital Partners (2). Rapid Response noted deforestation of 3,737 ha between February 14, 2020 and May 29, 2020 (3). Subsequently, NASA detected fires on the farms on July 3, 2020 (4). The CEO of Calyx Agro Brasil, Henrique Donati Snitcovski, is the current president of the National Association of Cotton Exporters (ANEA) and the head of the cotton arm of LDC (5).

- (1) <https://www ldc.com/press-releases/louis-dreyfus-company-announces-change-in-senior-leadership/>
- (2) Isa kson, R. (Ed.). (2017). New Directions in Agrarian Political Economy: Global Agrarian Transformations (Vol. 1). Routledge
- (3) http://www.mightyearth.org/wp-content/uploads/RR_Report_13_June_2020.pdf
- (4) <https://firms.modaps.eosdis.nasa.gov/download/>
- (5) http://www.mightyearth.org/wp-content/uploads/RR_Report_13_June_2020.pdf

Alert Imagery (before and after clearance)

10 January 2020



Source: European Union; contains modified 2020 data processed with EO Browser Copernicus Sentinel software

29 May 2020



Source: European Union; contains modified 2020 data processed with EO Browser Copernicus Sentinel software



12 Aug 2020

Source: European Union; contains modified 2020 data processed with EO Browser Copernicus Sentinel software

Rapid Response noted 350 ha of deforestation in Fazenda Butiatuvinha e Outra between January 10, 2020, and May 29, 2020 (1), followed by fires detected by NASA on August 12, 2020 (2). While Fazendas Butiatuvinha I, II, VII, VIII, IX and Pinheiros I and II have received authorization in 2019 to deforest 1,545 ha in 2019 and 2020 (3), the owner of the farms previously received multiple environmental fines (BRL 3,575,390) on his farms in Jaborandi and Correntina (BA), for clearing a total of 3,867 ha of native vegetation without authorization (4). Cargill reportedly has a business relationship with this producer on a different property and indicates their “due diligence did not find indication of illegal activity” and that they will “review the situation if future negotiations take place.”

- (1) http://www.mightyearth.org/wp-content/uploads/RR_Report_13_June_2020.pdf
- (2) <https://firms.modaps.eosdis.nasa.gov/download/>
- (3) <https://www.escavador.com/diarios/924126/DOEBA/executivo/2019-06-05?page=34>
- (4) <http://dadosabertos.ibama.gov.br/dataset/autos-de-infracao>

8. Fazenda Serrinha (Fazenda Horizonte) - Carolina, Maranhão

Alert Imagery (before and after clearance)

14 February 2020

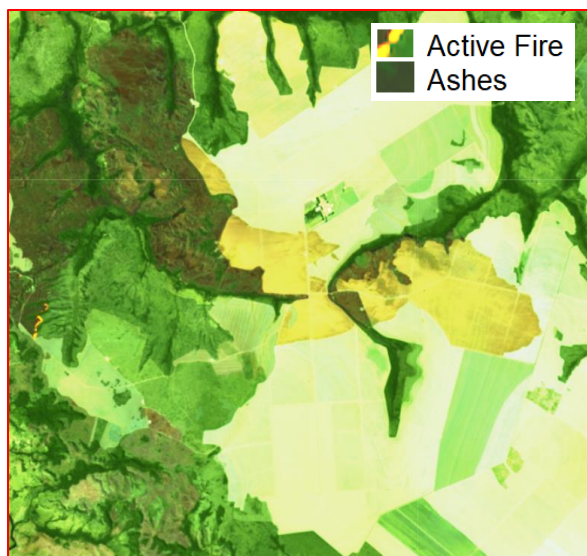


Source: European Union; contains modified 2020 data processed with EO Browser Copernicus Sentinel software

22 May 2020



Source: European Union; contains modified 2020 data processed with EO Browser Copernicus Sentinel software



15 Aug 2020

Source: European Union; contains modified 2020 data processed with EO Browser Copernicus Sentinel software

NASA detected a significant fire on Fazenda Serrinha on August 15, 2020 (1), where 845 ha of native vegetation was cleared between February 14, 2020 and May 22, 2020 (2). The owner of the farm produces soy, corn, wheat and cotton on a total area of 40,000 ha in Paraná, Bahia, Tocantins, and Maranhão (3). Linked company Agrícola Horizonte/Grupo Horizonte is involved in the processing and commercialization of the grain, and provides agricultural inputs and technical and logistical services (4). In response to Rapid Response report #13, Cargill indicated this farm is no longer in their direct supply chain.

- (1) <https://firms.modaps.eosdis.nasa.gov/download/>
- (2) http://www.mightyearth.org/wp-content/uploads/RR_Report_13_June_2020.pdf
- (3) <https://agrovevenda.com.br/top-farmers-2019-grupo-conecta-aposta-no-conhecimento/>
- (4) <https://www.agricolahorizonte.com.br>

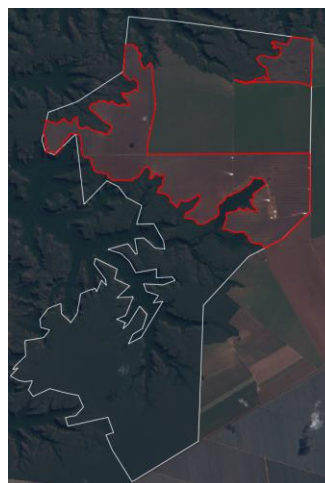
Alert Imagery (before and after clearance)

19 April 2020

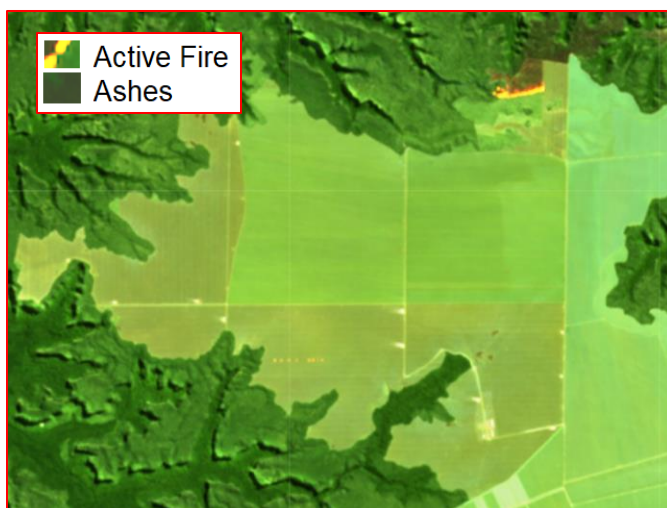


Source: European Union;
contains modified 2020
data processed with EO
Browser Copernicus
Sentinel software

23 June 2020



Source: European Union;
contains modified 2020
data processed with EO
Browser Copernicus
Sentinel software



16 Jul 2020

Source: European Union;
contains modified 2020
data processed with EO
Browser Copernicus
Sentinel software

A total of 1,344 ha of wooded savanna was cleared on this 5,423 ha farm Fazenda Primavera between April, 19, 2020 and June 23, 2020 (1). The farm, registered under Agro Pecuaria Primavera, is officially owned by now deceased Euclides de Carli (2), reportedly the largest land grabber in Matopiba controlling over 1 million hectares of land (3,4). De Carli's linked company CODECA is connected to TIAA-CREF investments in Brazil, operated by RADAR S/A, a joint venture with Cosan (5, 6). On July 16, 2020, NASA detected fires on the farm (7).

- (1) http://www.mightyearth.org/wp-content/uploads/RR_Report_June_2020.pdf
- (2) <https://casadosdados.com.br/solucao/cnpj/agro-pecuaria-primavera-ltda-23428238000118>
- (3) <https://reporterbrasil.org.br/2018/09/empresario-euclides-de-carli-acusado-mortes-roubo-terras-nordeste/>
- (4) <https://deolhonosruralistas.com.br/2018/02/21/especulacao-com-terras-no-matopiba-deixa-rastros-de-grilagem-e-violacoes-aos-direitos-humanos/>
- (5) <https://www.nytimes.com/2015/11/17/world/americas/tiaa-cref-us-investment-giant-accused-of-land-grabs-in-brazil.html>
- (6) <https://chainreactionresearch.com/wp-content/uploads/2020/01/Radar-company-report-2.pdf>
- (7) <https://firms.modaps.eosdis.nasa.gov/download/>

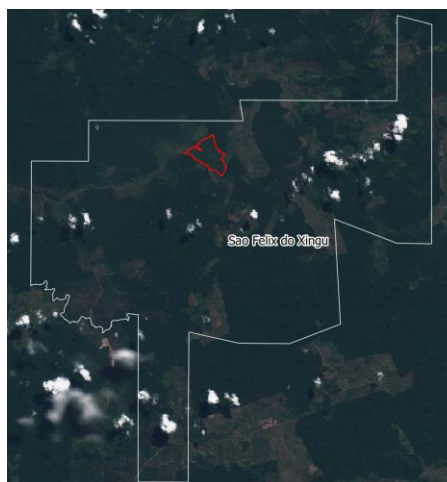
Alert Imagery (before and after clearance)

01 Oct 2019

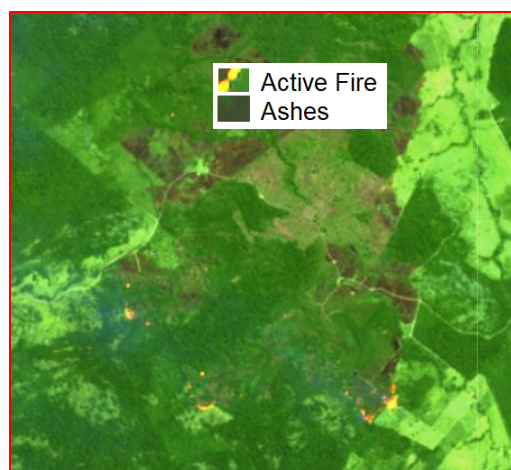


Source: European Union; contains modified 2019 data processed with EO Browser Copernicus Sentinel software

27 June 2020



Source: European Union; contains modified 2020 data processed with EO Browser Copernicus Sentinel software



16 Aug 2020

Source: European Union; contains modified 2020 data processed with EO Browser Copernicus Sentinel software

Between October, 10, 2019 and June 27, 2020 a total of 929 ha of Amazon rainforest was cleared on farms Fazenda Lagoa do Triunfo IV and V (1). Fires set on these farms were detected by NASA on August, 16, 2020 (2). In 2019, Rapid Response also detected fire outbreaks on the Lagoa do Triunfo farm cluster (3), which consists of Fazenda Lagoa do Triunfo I, II, III, IV, V, and VI, and is owned by Agropecuária Santa Barbara Xinguara (AgroSB) (4, 5). The cluster of farms totals 145,000 ha (6). An investigation of Repórter Brasil, The Guardian and Bureau of Investigative Journalism shows that AgroSB raises cattle in areas embargoed by Ibama on the Lagoa do Triunfo farm (7). Cattle from Fazenda do Triunfo was transferred for fattening to Fazenda Espírito Santo, which directly supplied JBS, Minerva, Frigol, Marfrig and Frigorífico Vale ^ncio. In 2019 and 2020, Ibama fined the farm cluster four times for illegal clearance of native vegetation, amounting to BRL 22 million (8).

(1) http://www.mightyearth.org/wp-content/uploads/RR_Report_June_2020.pdf

(2) <https://firms.modaps.eosdis.nasa.gov/download/>

(3) http://www.mightyearth.org/wp-content/uploads/Rapid-Response_Soy-and-Cattle_Special-Report_Fires_Sept-2019.pdf#new_tab

(4) <http://car.semas.pa.gov.br>

(5) <https://agrosb.com.br>

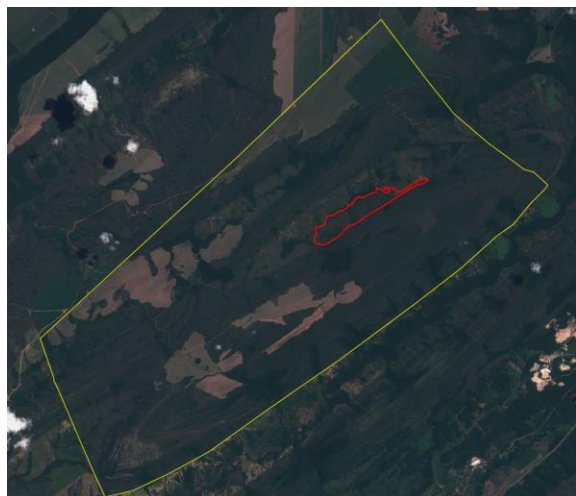
(6) <https://www.theguardian.com/environment/2019/jul/02/revealed-amazon-deforestation-driven-global-greed-meat-brazil>

(7) <https://rollingstone.uol.com.br/edicao/37/bala-na-agulha-1/>

(8) <https://servicos.ibama.gov.br/ctf/publico/areasembargadas/ConsultaPublicaAreasEmbargadas.php>

Alert Imagery (before and after clearance)

01 Apr 2020

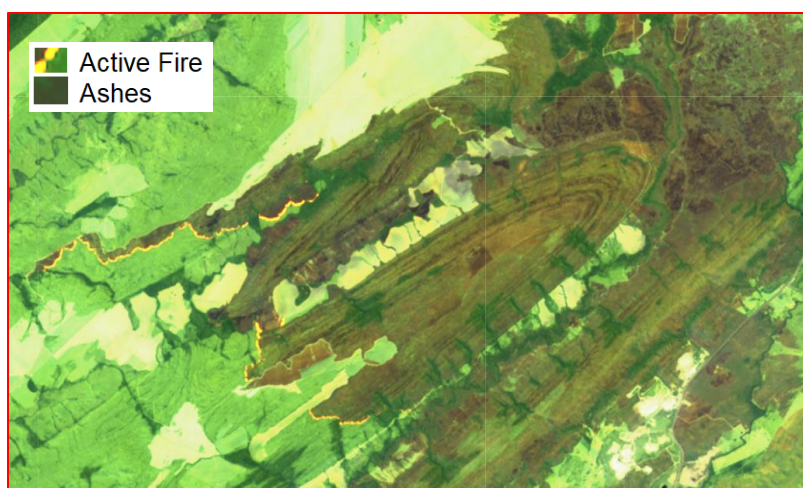


Source: European Union; contains modified 2020 data processed with EO Browser Copernicus Sentinel software

25 Jun 2020



Source: European Union; contains modified 2020 data processed with EO Browser Copernicus Sentinel software



03 Sep 2020

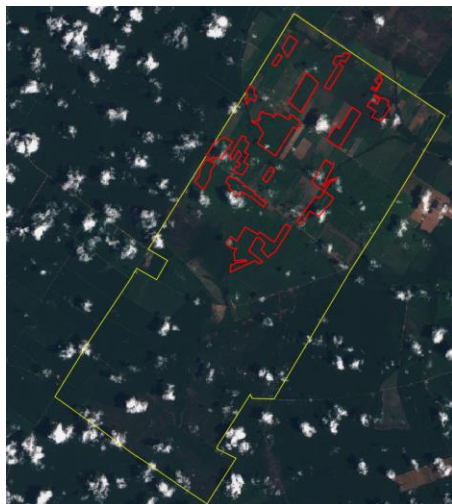
Source: European Union; contains modified 2020 data processed with EO Browser Copernicus Sentinel software

Fazenda Bananal in Diamantino (MT) saw 128 ha of deforestation in the natural reserve Área de Proteção Ambiental Nascentes do Rio Paraguai between April 1, 2020 and June 25, 2020 (1), followed by fire detected by NASA on September 3, 2020 (2). The farm supplied soy to Bunge in at least 2015, 2017, and 2018 (3). The farm also potentially indirectly supplied cattle to Minerva's slaughterhouse in Várzea Grande (MT), through cattle transfers on three farms under similar ownership. There is an ongoing land dispute related to this property location with details published in the August 2020 Rapid Response report 16 (4).

- (1) http://www.mightyearth.org/wp-content/uploads/RR_Report_July_2020-2.pdf
- (2) <https://firms.modaps.eosdis.nasa.gov/download/>
- (3) Un disclosed invoices
- (4) http://www.mightyearth.org/wp-content/uploads/RR_Report_July_2020-2.pdf

Alert Imagery (before and after clearance)

18 Dec 2019

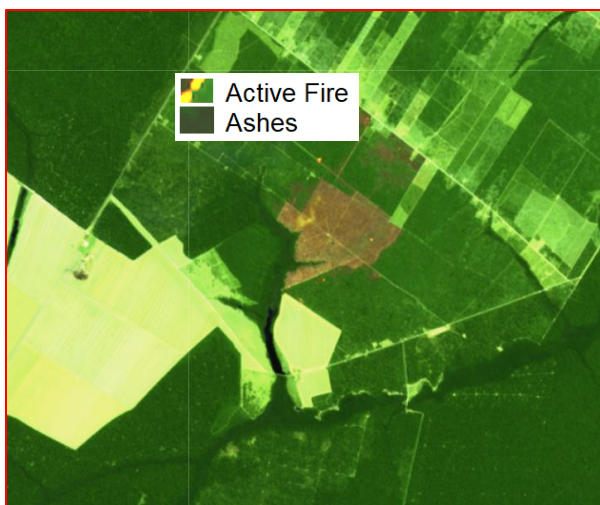


Source: European Union; contains modified 2019 data processed with EO Browser Copernicus Sentinel software

25 Jul 2020



Source: European Union; contains modified 2020 data processed with EO Browser Copernicus Sentinel software



14 Aug 2020

Source: European Union; contains modified 2020 data processed with EO Browser Copernicus Sentinel software

The 7,606-ha farm Fazenda Dona Mercedes Sede II Lote São José saw significant clearing of 1,523 ha of native vegetation between December 18, 2019 and July, 25, 2020, of which 1,205 ha was in a declared Legal Reserve (1). NASA detected active fires on the farm on June 17, 2020, and images taken on August, 14, 2020 show areas covered with ash (2). The farm has produced soy at the very least in the 2016-2017 season. In 2012, the self-declared owner (the CAR was not fully approved (3)) reported theft of wood from his five properties in União do Sul (4, 5) indicating that this producer was at that time involved in logging.

- (1) http://www.mightyearth.org/wp-content/uploads/RR_Report_July_2020-2.pdf
- (2) <https://firms.modaps.eosdis.nasa.gov/download/>
- (3) <https://monitoramento.sema.mt.gov.br/simcar/tecnico.app/publico/car>
- (4) <http://g1.globo.com/mato-grosso/noticia/2012/10/policia-investiga-roubo-de-torcas-em-propriedades-de-fazendeiro-em-mt.html>
- (5) <http://www.pjc.mt.gov.br/noticia.php?id=10228>