



Home

About Us

Operations

Sustainability

Investors

News

Blog

Home > Business

### Reserves & Resources

### Mines

### Smelter & Refinery

### Products



### Research & Development

## STOCK PERFORMANCE

LEARN MORE

# Serbia Zijin Copper

Location	Bor, Serbia
Ownership	63%
Project status	In operation + Under expansion
Deposit Type	Porphyry Cu-Au+HS Epithermal
Reserves & resources	Contained copper of 10.12Mt with grade of 0.40% and gold of 360t with grade of 0.001g/t
Mining & Processing methods	Open-pit mining + underground mining + gravity Separation + flotation
2020 production	52,000 tonnes of mined copper, including 46,900 tonnes of copper cathodes



Home

About Us

Operations

Sustainability

Investors

News

Blog

## News

More >



### Chinese technology helps cut emissions at Serbia plant

The city of Bor in Serbia has a decades-old air pollution problem due to its proximity to

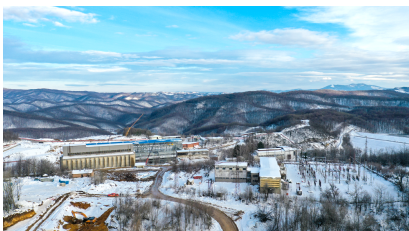
2021.08.04



### Serbia to become Europe's no. 2 copper producer thanks to Cukaru Peki mine

Cecilia Jamasmie | June 16, 2021 | 7:39 am <https://www.mining.com/serbia-to-become->

2021.06.18



### Serbia Zijin Copper Doo Bor Delivers Strong Q1 Results

Zijin News-Serbia Zijin Copper Doo Bor achieved revenue of \$222 million in the first

2021.04.16





[Home](#)

[About Us](#)

[Operations](#)

[Sustainability](#)

[Investors](#)

[News](#)

[Blog](#)

## Contact Us

Add:No. 1 Zijin Road, Shanghang County, Longyan

City, Fujian Province

Postal Code: 364200

Tel: 0592-2933586

Email: [international@zijinmining.com](mailto:international@zijinmining.com)

Copyright 2015 Zijin Mining Group Co., Ltd. All Rights Reserved.