



BENEFITING THE ENVIRONMENT & Creating a Cleaner, Brighter Future



PROJECT OVERVIEW

The 27 MW Klipheuwel Wind Farm is one of the first wind farms arising from the South African Government's Renewable Energy Independent Power Producer Procurement Programme (REIPPPP).

Klipheuwel Wind Farm, covering over 350 hectares, is located 5km west of Caledon, in the Overberg region of the Western Cape, in the Theewaterskloof Local Municipality.

With demand for electricity continuing to grow in South Africa, the introduction of this clean energy has far reaching benefits for the country's power sector, economy and people.

PROJECT DESCRIPTION

Klipheuwel Wind Farm generates approximately 86 gigawatt hours per year, supplying enough clean, renewable electrical energy to power more than 19 000 average South African homes.

The wind farm generates electricity using 9 Sinovel SL3000/113 wind turbine generators, each with a rated power output of 3 000kW, a rotor diameter of 113.3m and a hub height of 90m, and feeds into the 66kV line between Houwhoek and Caledon.

The project has a 20-year Power Purchase Agreement with Eskom as well as an Implementation Agreement with the Government of South Africa.



ECONOMIC DEVELOPMENT PROGRAMMES

A percentage of revenues is spent on socio economic and enterprise development programmes. **Enterprise development includes initiatives to assist and accelerate the sustainability of local enterprises. Socio-economic development initiatives promote access to the economy for all people.**

These programmes will continue for the 20-year lifespan of the project and focus on local communities in the Caledon, Kleinmond, Grabouw, Villiersdorp, Tesselardal, Genadendal, Greyton, Botrivier, Rooi Els, Hermanus, Gaansbaai and Somerset West areas.



BENEFITS TO LOCAL COMMUNITIES



The local communities in the vicinity of the Klipheuwel Wind Farm benefit from Enterprise Development and Socio Economic Development Contributions; Community Trust ownership; as well as Employment and Procurement opportunities.

COMMUNITY TRUST



20 percent of the Klipheuwel Wind Farm is owned by a group of trusts namely, Malibongwe Women Development Trust; Ikamva Labantu Empowerment Trust and The Klipheuwel Wind Farm Community Trust who form part of the corporate entity, Tundrasign. This ownership level is significantly higher than the governments minimum threshold of 2.5% local ownership.



1.25 percent of the allocated budget is partly focused on educational and socio-economic support, in the following areas:

- Sponsorship of teachers and equipment
- A school bursary programme
- A laundry service for an old age home
- An enterprise development programme to help local businesses

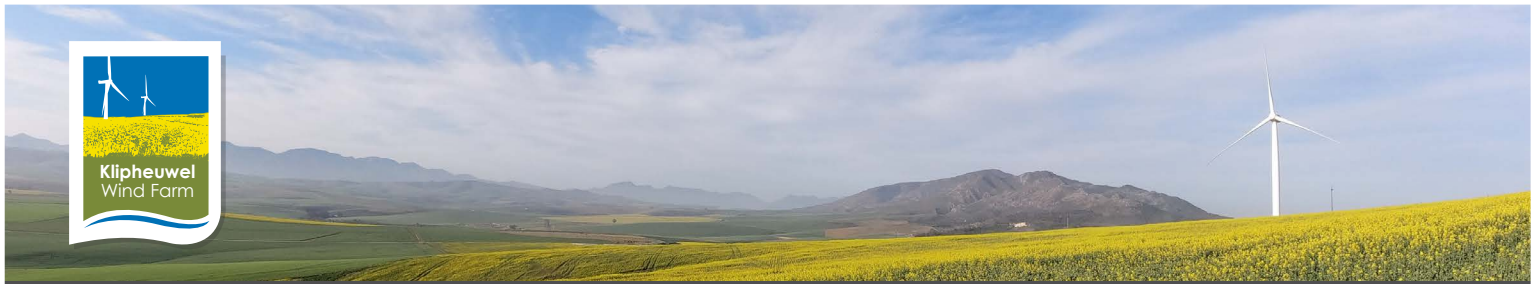


www.facebook.com/KlipheuwelWind



www.klipheuwelwind.co.za





WHAT THE PROJECT MEANS FOR **SOUTH AFRICA**

Electricity produced from wind is clean and renewable. Wind generation reduces the country's reliance on coal fired generation, which emits CO2 and other damaging gases into the environment. As wind energy does not consume water during the generation process it also helps preserve scarce water resources.

The project conducted a comprehensive Environmental Impact Assessment, which included public consultation and received full Environmental Authorisation from the Department of Environmental Affairs.

Klipheuwel Wind Farm received a full Environmental Authorisation from the Department of Environmental Affairs, with no appeals in 2011.

- **Expected Electricity Production** | 86 000 MWh per year
- **Power for average South African Homes** | 19 000 average households each year
- **Annual CO2 emissions avoided** | 24 080 Tonnes
- **Project Lifetime CO2 emissions avoided** | 481 600 Tonnes
- **Water savings** | 54 000 000 Litres per year



PROJECT INVESTORS

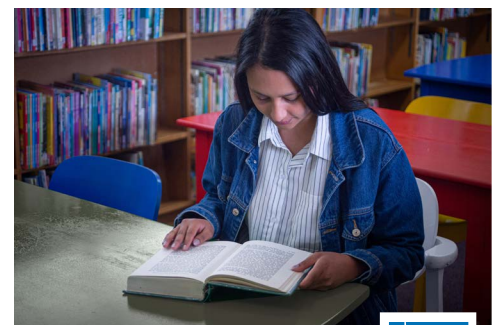
Globeleq is an experienced developer, owner and operator of independent power projects in Africa. Since the company was founded in 2002, it has participated in over 7,800 GW of generation capacity and invested US\$1bn of equity across 37 power projects in 24 countries. Globeleq currently owns, operates and invests in 1,237 MW of electricity generation in Africa, with another 2,000 MW in development.

Globeleq is a power industry leader and is committed to providing safe, reliable and cost effective power to the grid, significantly contributing to the social and economic growth in the region.

Other project investors include:

- Winners Circle
- Overberg Wind Power
- Malibongwe Women Development Trust
- Ikamva Labantu Empowerment Trust
- The Klipheuwel Wind Farm Community Trust
- **Operating Partner | Operations Management Company**

Globeleq



www.facebook.com/KlipheuwelWind



www.klipheuwelwind.co.za

