



TRURICH

[Home](#)

[About Us](#)

[Our Project Area](#)

[Highlight](#)

[Gallery](#)

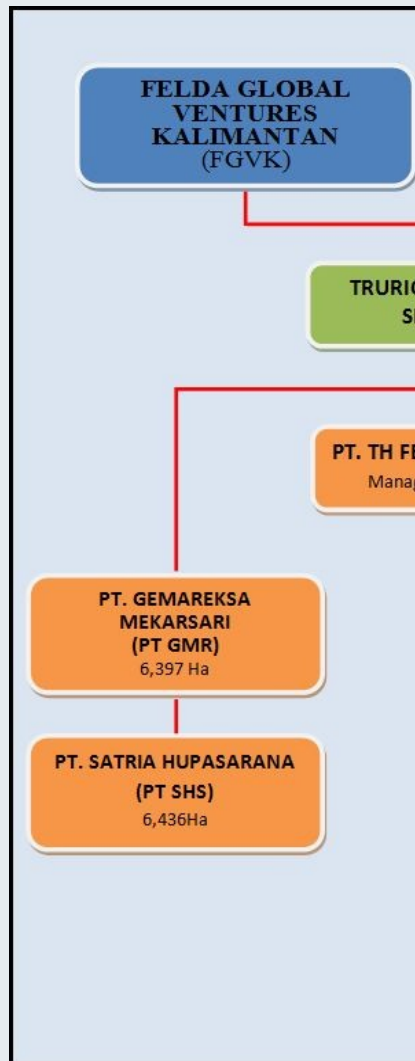
site navigation: [Home](#) > [about us](#) > [investment overview](#)

[Contact Us](#)

INVESTMENT OVERVIEW

As of 2013, Trurich has acquired a total of 41,99 (Kaltara) and Central Kalimantan (Kalteng) through companies. These companies are;

- PT. Gemareksa Mekarsari - Angsana and Beli
- PT. Satria Hupasarana - Beringin and Gaharu
- PT. Teknik Utama Mandiri - Delima, Intan and F
- PT. Anugrah Kembang Sawit Sejahtera - Zam
- PT. Usaha Kaltim Mandiri - Baiduri, Nilam, Muti



[About TRSB](#)

[Business Overview](#)

[Investment Overview](#)

[Board of Director](#)

